



## EVA-Metal

**EVA-Metal are coil-coated galvanised sheets coated with Evalon Single Ply Membrane.**

The duplex coating on both sides, i. e.

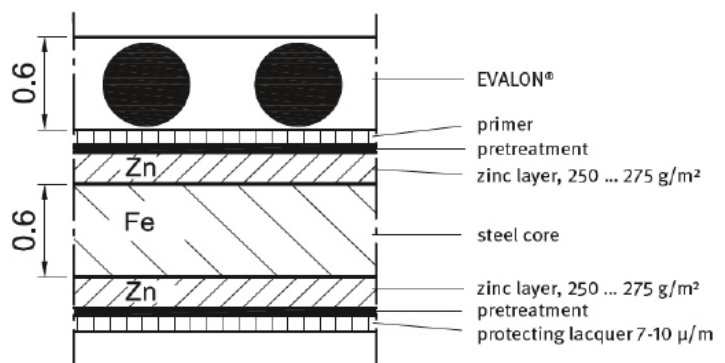
- EVALON® (white, light grey or slate grey) on the upper side
- Zinc layer and organic protecting lacquer on the lower side provides for optimal corrosion protection.

The zinc layer prevents corrosion below the coating, the coating prevents abrasion of the zinc layer.

Practice has shown that corrosion resistance of a duplex coating is 1.2 ... 2.5 times higher than the total of the individual protection of the zinc layer and the coating (synergetic effect).

- Available in white\*, light grey and slate grey
- Size: 1000mm x 2000mm
- Thickness: approx. 1.2mm

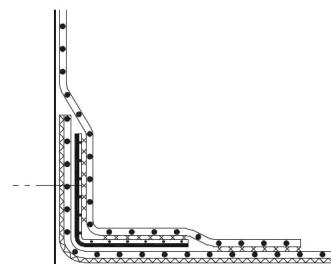
\*EVA-Metal only



The sheared edges of EVA-Metal sheets are also corrosion-protected because of the cathodic protection effect. When the zinc layer and the steel core get into electroconductive contact via electrolyte (humidity, precipitation), a galvanic element is formed. The baser metal zinc “dissolves”, migration of ions from the zinc to the steel occurs. The bare sheared edges are protected against corrosion. Temporarily, i. e. until the formation of the protection layer, the surfaces may change colour.

### EVA-METAL SHEETS :

- Can be bent on any standard sheet metal bending machine. The bending radius should be min. 1.2 - 1.8 mm. Coated metal angles are to be bent with an angle which is approx. 10° - 15° wider than the required angle, so the angle legs will fit closely to the substrate when fastened.
- Must be stored horizontally on a dry and plain area.
- Are to be processed (cutting, bending) at room temperature (approx. 18 °C).
- Should be cut with sharp tools with the protecting lacquer coating up. The cutting clearance should be 0.03 to 0.04 mm.
- Should be fastened with non-corrosive screws or other suitable fastening elements.



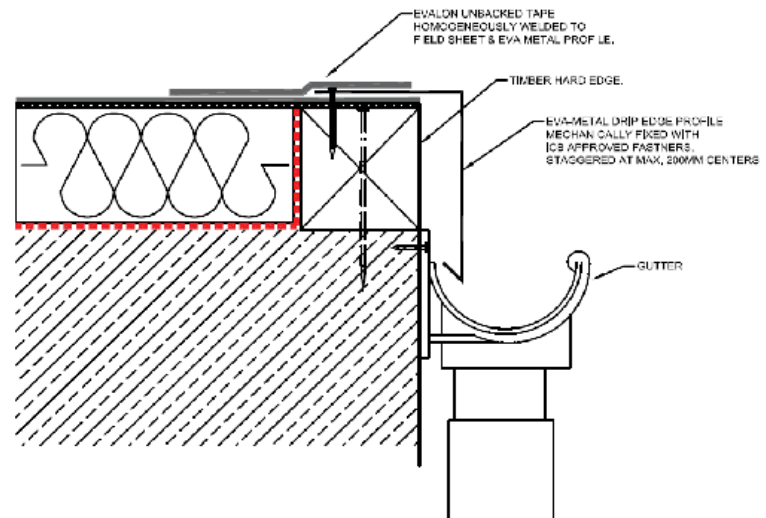


# ICB WATERPROOFING

## Datasheet

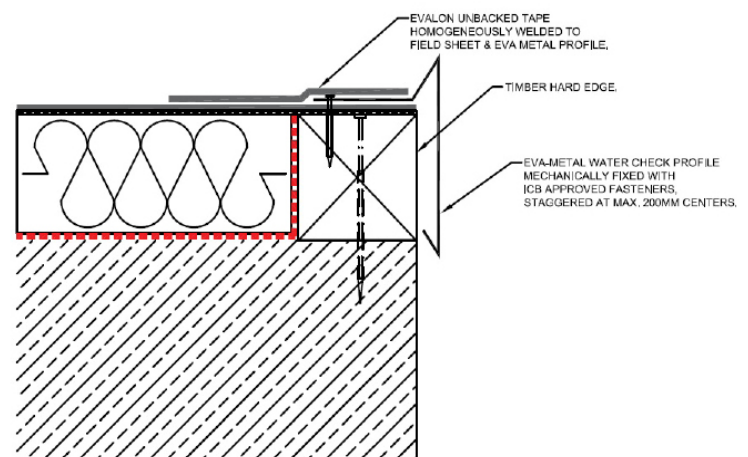
### EVA-METAL STANDARD DRIP PROFILES:

- Front Face: 50mm-200mm
  - Available in white\*, light grey and slate grey
- \*EVA-Metal only



### EVA-METAL STANDARD WATER CHECK PROFILES:

- Front Face: 75mm for 50mm drip edge - 225 for 200mm drip edge
- Available in light grey and slate grey



### PARAPET WALL ENCAPSULATION:

