



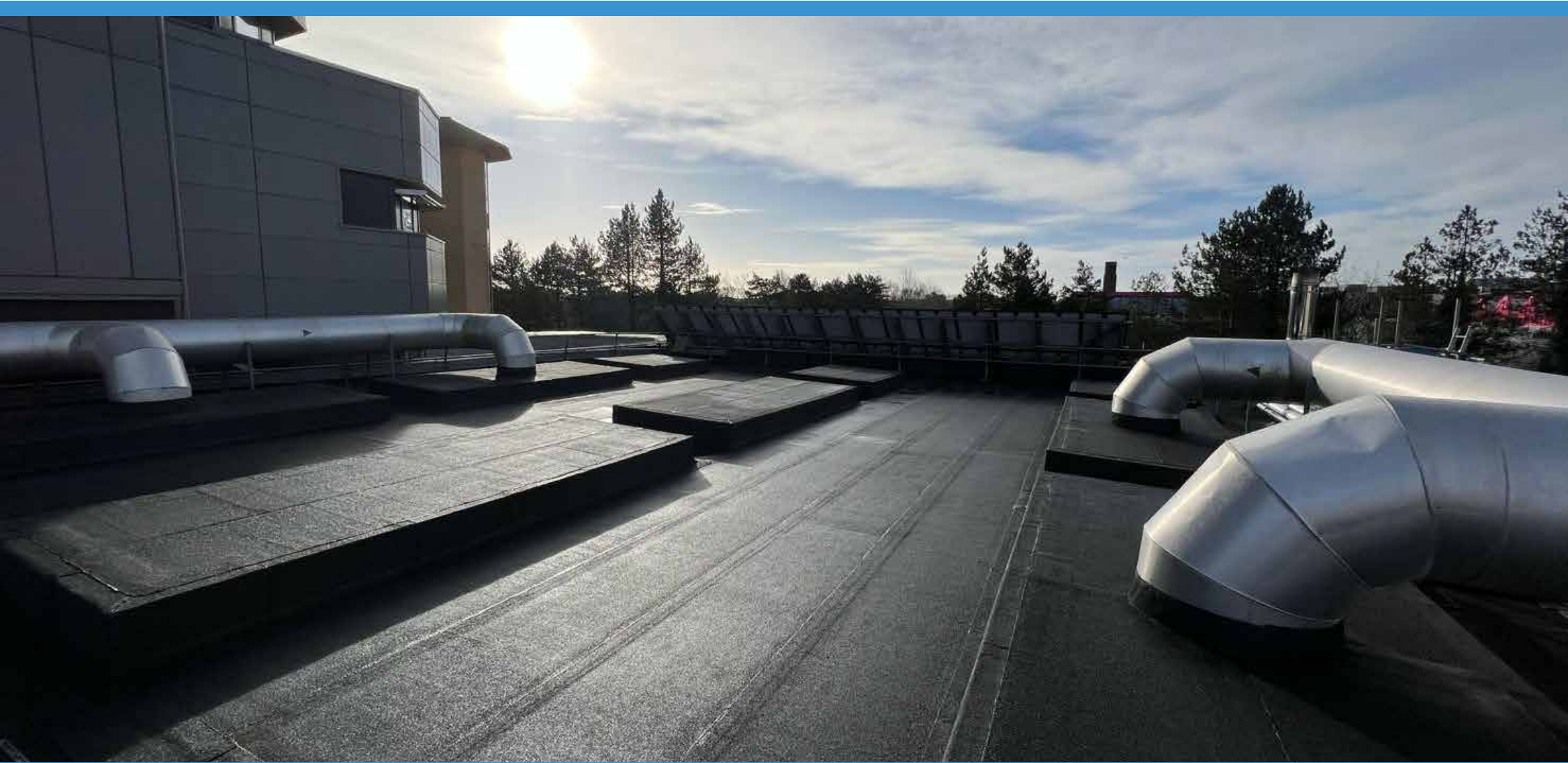
REINFORCED BITUMEN MEMBRANES (RBM)



 **ICB WATERPROOFING**



INTRODUCING STRATA



ICB Waterproofing's range of Reinforced Bitumen Membranes

The Strata RBM (Reinforced Bitumen Membranes) range from ICB Waterproofing offers a selection of flat roof waterproofing systems. These cost-effective products are mainly traditional bitumen-based felts, which remain widely used throughout the UK, for various flat roofing applications, particularly for waterproofing.

EASY TO APPLY

The Strata range, including APP and SBS modified bitumen torch-on membranes, is known for its reliability and effectiveness in waterproofing. The membranes are easy to apply, offer good flexibility in cold conditions, and have a high resistance to heat and UV rays.

SAFE TO TORCH

ICB Waterproofing Ltd are proud to support and be a registered member of the NFRC Safe2Torch campaign. In recent times, a number of flat roof fires have been linked to improper use of naked flames or other methods of 'hot works'.

For this reason, the Safe2Torch campaign seeks to overcome these issues by implementing a process that removes potential risks and therefore changes the public's perception of the industry for the better, where safety comes as second nature.

Datasheets on all products are available for download on our website - icbwaterproofing.co.uk

THE STRATA RANGE



STRATAPRIME

/ 5

Rainfall-resistant, rapid-drying bitumen primer

STRATAPRIME is a rainfall-resistant, rapid-drying bitumen primer designed to deeply penetrate and seal porous surfaces, providing a base for bituminous waterproofing and flashing systems. As a diverse primer, it can be applied to damp as well as dry surfaces due to its built-in wetting agent.

SIMPLE BRUSH APPLICATION

Ideal for the sealing of:

- Metal
- Concrete cement
- Slate
- Roofing fibre cement
- Bitumen-based materials
- Flashing tapes



Primers

Vapour Barriers

Base Layers

Cap Sheets

EVAPRIME SA R & SA S

Primers

Vapour Barriers

Base Layers

Cap Sheets

High performance solvent based primers

EVAPRIME SA R

EVAPRIME SA R ensures that self-adhesive membranes can be used all year round and increases the bond strength between the membrane and substrate dramatically. It is simple to apply, and provides a flexible, cohesive bond.

EVAPRIME SA S

EVAPRIME SA S provides an outstanding bond it is simple to apply and provides a flexible cohesive bond. EVAPRIME SA S is a polymeric primer that permanently bonds the membrane. It is applied using a spray wand to ensure rapid and even coverage.

FEATURES & BENEFITS

- The solvent quickly evaporates to create a fast and permanent high-performance bond
- Primer dramatically increases the bond strength of the self-adhesive membrane
- Contains reduced levels of volatile solvents to help meet environmental standards



STRATACON

/ 7

Air and vapour control layer (AVCL) - Torch-on

STRATACON is a torch-on membrane consisting of an elastoplastomeric modified bitumen reinforced with a strengthened glass fibre mat. It is designed to control the passage of water in flat roofing build-ups.

It is finished with a thin, thermo-fusible underside film, which easily melts upon torching. It is quick and easy to apply STRATACON.

FEATURES

- Tolerates MODERATE humidity levels (100.000 μ)
- For use in temperatures above 0°C

PRIMER REQUIRED



Primers

Vapour Barriers

Base Layers

Cap Sheets

STRATAVAP

Primers

Vapour Barriers

Base Layers

Cap Sheets

Self-adhesive, aluminium foil air and vapour barrier

STRATAVAP is a cold-applied, self-adhesive bituminous air and vapour barrier which is saturated and coated with high quality SBS (Styrene-Butadiene-Styrene) modified bitumen. It has an integrated aluminium foil layer, a glass fibre reinforcement and is finished on the underside with a removable siliconised film.

TYPICAL USE

STRATAVAP is designed for use as a high performance air and vapour barrier, and is ideal for use on either metal profiled or plywood decking and in areas prone to increased temperatures and moisture levels (e.g. factories, swimming pools, gyms).

STRATAVAP should be used as part of a multi-layer built-up roofing system.

FEATURES & BENEFITS

- Cold-applied, self-adhesive application
- Ideal for flame-free installations
- Steam sealing technology
- Walkable and puncture proof
- Excellent tear strength resistance
- Forms an airtight layer
- Resistant to chemicals and aging
- Excellent low temperature flexibility at -25°C



STRATACON SA

/ 9

Self-adhesive, SBS modified vapour control layer, underlay, and carrier membrane

STRATACON SA is a polyester reinforced roofing base layer, saturated and coated with high quality SBS (Styrene-Butadiene-Styrene) modified bitumen. The membrane is protected with fine-grained sand on its upper layer, whilst the bottom layer features a self-adhesive compound coating, covered with removable film.

TYPICAL USE

STRATACON SA is designed for use as a vapour control layer or base layer in built-up roofing systems. It can be specified for both new build or refurbishment projects and is ideal for use on buildings where torch-on membranes cannot be used for fire safety reasons.

STRATACON SA is compatible with all common substrates and should be used as part of a multi-layer built-up roofing system.

FEATURES & BENEFITS

- Cold-applied, self-adhesive application
- Ideal for flame-free installations
- Easy-peel removable film
- Tough polyester reinforcement, providing additional dimensional stability and mechanical strength
- Good resistance to foot marking
- Versatile roofing membrane - compatible with a range of substrates and built-up roofing systems
- Excellent low temperature flexibility at -15°C



Primers

Vapour Barriers

Base Layers

Cap Sheets

STRATABASE SA

Primers

Vapour Barriers

Base Layers

Cap Sheets

Elastomeric distilled polymer-bitumen self-adhesive base layer

STRATABASE SA consists of thick elastomeric (SBS) distilled polymer-bitumen membrane, reinforced with a non-woven composite polyester fabric and stabilised with fibreglass. The membrane has a self-adhesive backing, to join sheets without any waste.

The STRATABASE SA range provides a traditional felt system that can be used in areas where hot works are not permitted. The self-adhesive backing allows the membrane to be directly applied to insulation boards and timber surfaces.

FEATURES & BENEFITS

- Cold-applied, self-adhesive application
- Reduces hot bitumen fumes and harmful emissions from adhesives
- High mechanical resistance and dimensional stability
- Saves on the cost of adhesives and the associated costs of transport and application



STRATABASE APP & STRATACAP APP/ 11

Bituminous plastomeric torch-on waterproofing membranes APP modified

STRATABASE APP and STRATACAP APP consist of a special compound based on distilled bitumen modified with selected atactic polypropylene and reinforced with a non-woven spunbond polyester reinforcement. This makes it strong, flexible, and stable in high and low temperatures as well as excellent resistance to UV rays.

The underside of STRATABASE APP and STRATACAP APP is finished with a thin thermofusible film, which easily melts upon torching making it quick and easy to install. The upper side of the STRATACAP-APP version is finished with a uniform layer of factory-applied natural

or coloured slate chippings and is provided with a lateral selvedge for overlapping.

FEATURES & BENEFITS

- Versatile and easy to install
- Suited to both residential and industrial waterproofing
- Compatible with most roofing materials
- Cold flexibility to -10°C
- Excellent heat resistance

PRIMER REQUIRED



Primers

Vapour Barriers

Base Layers

Cap Sheets

STRATABASE SBS & STRATACAP SBS

Primers

Vapour Barriers

Base Layers

Cap Sheets

Bituminous plastomeric torch-on waterproofing membranes

STRATABASE-SBS and STRATACAP-SBS consist of a special compound based on distilled bitumen modified with selected elastomers and reinforced with a non-woven spunbond polyester reinforcement. This makes it strong, flexible, and stable in high and low temperatures as well as excellent resistance to UV rays.

The SBS modified waterproofing compound assures good flexibility at low temperatures and excellent properties of elongation and resistance to roof movements.

PRIMER REQUIRED

The STRATA range from ICB Waterproofing is manufactured under a closely controlled system which conforms to the ISO 9001 requirements and guidelines.

FEATURES & BENEFITS

- Versatile and easy to install
- Suited to both residential and industrial waterproofing
- Compatible with most roofing materials
- Cold flexibility to -15°C
- Excellent heat resistance



STRATAPRO M FR

/ 13

A multi-layer composite bitumen waterproofing membrane

STRATAPRO M FR (Fire Resistant) is a multi-layer composite bitumen waterproofing membrane. The underside of the membrane is made of SBS modified bitumen, while the upper layer is made of APP modified bitumen. The SBS on the lower face offers a high level of flexibility, and boasts elongation of up to 2000%. The upper layer consists of an elastoplastic mix of distilled bitumen, atactic and isotactic polypropylene and UV resistant polyolefin elastomers, supplemented with thermal shock stabilisers.

The composite prefabricated three-layer reinforcement system has a fiberglass mat compressed between two layers of non-woven polyester fabric. This

reinforcement limits the movements of the membrane both at high and low temperatures providing stability.

FEATURES & BENEFITS

- Remains flexible in temperatures as low as -25°C
- High resistance to thermo-oxidative ageing.
- Suitable for either torched or mechanical fixing
- Fibers within the membrane are coated with elastomeric mix guaranteeing absolute waterproofing



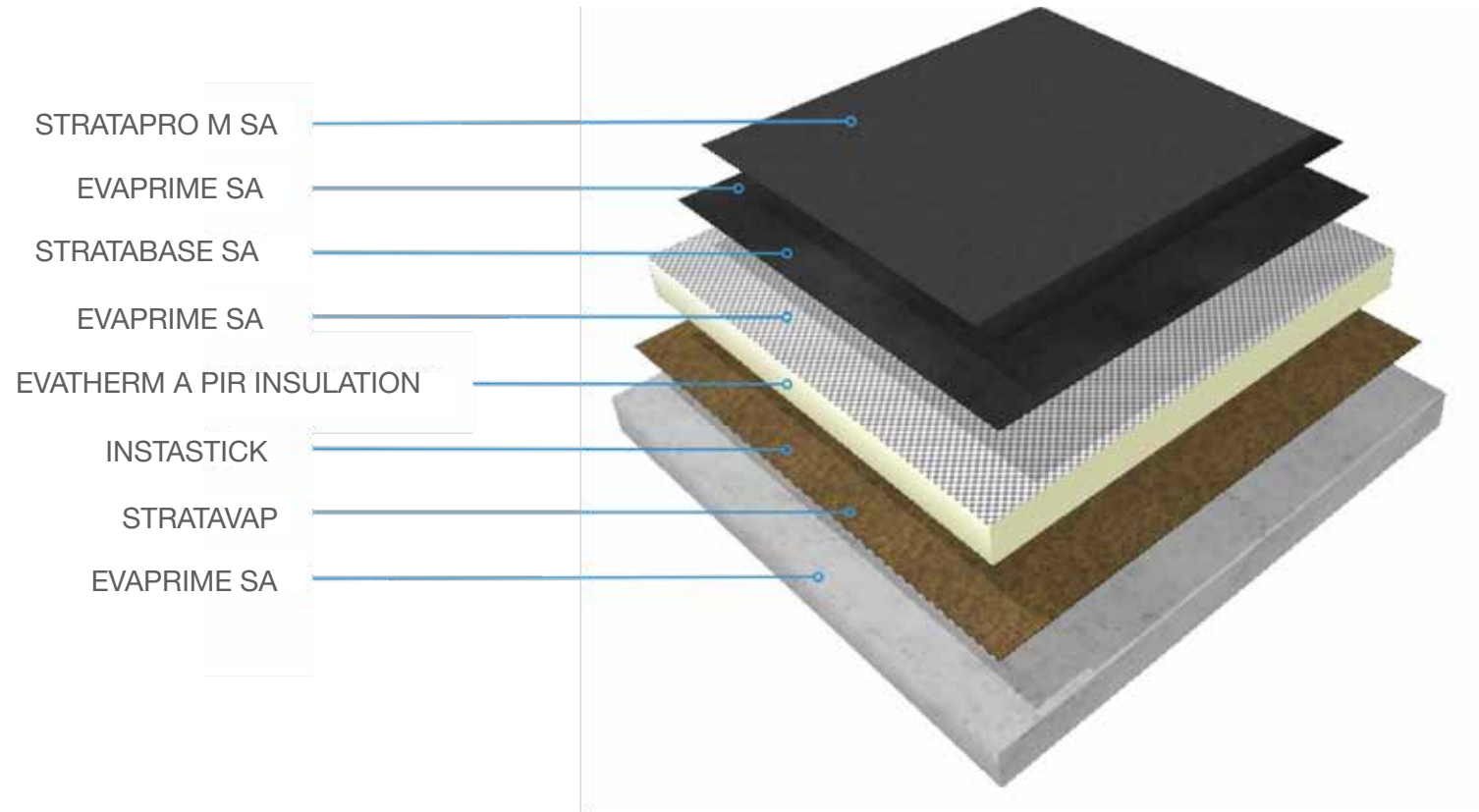
Primers

Vapour Barriers

Base Layers

Cap Sheets

STRATAPRO M SA



PART OF A FULLY FLAME-FREE RBM SYSTEM / 15

A self- adhesive multi-layer composite bitumen waterproofing membrane

STRATAPRO M SA is a multi-layer composite bitumen waterproofing membrane. The underside of the membrane is made of SBS modified bitumen, while the upper layer is made of APP modified bitumen. The SBS on the lower face offers a high level of flexibility and boasts elongation of up to 2000%. It will remain flexible in temperatures as low as -25°C and has a high resistance to thermo-oxidative aging. The upper layer consists of an elastoplastomeric mix of distilled bitumen, atactic and isotactic polypropylene and UV resistant polyolefin elastomers, supplemented with thermal shock stabilisers.

PRIMER REQUIRED

FEATURES & BENEFITS

- Forms part of a FULLY flame-free RBM system
- Safer, quicker and flame-free
- Independently tested for wind and fire resistance



Primers

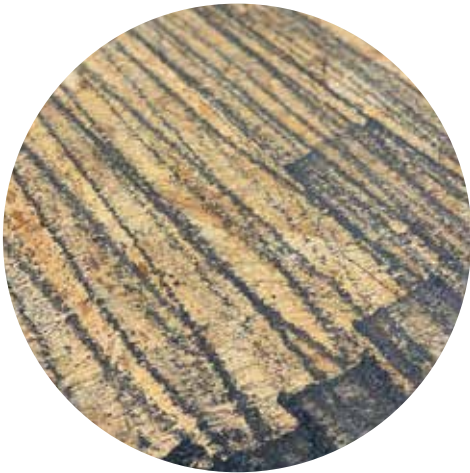
Vapour Barriers

Base Layers

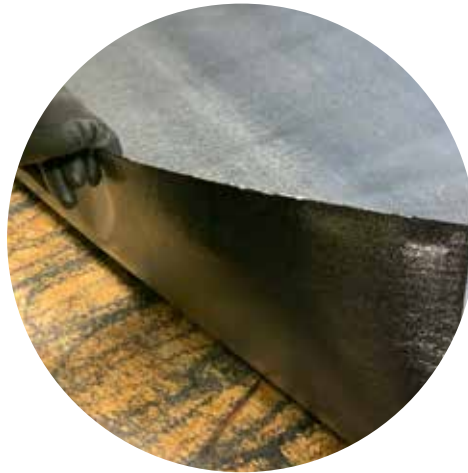
Cap Sheets

STRATAPRO M SA

Installation Process



Prime the substrate
with EVAPRIME SA



Apply STRATAVAP



Lay insulation and adhere
it with Instastick, prime
with EVAPRIME SA & apply
STRATABASE SA



Prime face of
STRATABASE SA



Install STRATAPRO M SA



Using a heat gun, weld the laps to seal the membrane



Ensure 5-10mm uniform bead is formed

SAFER,
QUICKER &
FLAME FREE

Primers

Vapour Barriers

Base Layers

Cap Sheets

STRATACAP PLUS

Primers

Vapour Barriers

Base Layers

Cap Sheets

Reinforced distilled polymer-bitumen elastomeric waterproofing membranes

STRATACAP PLUS is a flexible reinforced 4mm granulated torch-on SBS waterproofing membrane, developed for low temperatures in the varied UK climate. The membrane has a cold flexibility of -25°C, making it considerably superior to ordinary counterparts. Developed with a compound of distilled bitumen with a high quantity of thermoplastic rubber, STRATACAP PLUS offers an ultimate elongation of 2000% and an elastic recovery of 300%.

The mineral finish (slate granules, which are bonded and hot pressed) protects the upper surface from UV, giving it a long lifecycle. It can be recycled once it has served its purpose, perfect for buildings with its non-toxic waste at the end of life.

FEATURES & BENEFITS

- Versatile and easy to install
- Suited to both residential and industrial waterproofing
- Can be laid on most surface types, including sloping, flat & curved
- Recyclable and non-toxic
- Approved for use as a single layer overlay on suitable substrates
- Cold flexibility to -25°C

PRIMER REQUIRED



STRATAGREEN

/ 19

Root-resistant waterproofing membrane

STRATAGREEN is a root-resistant waterproofing membrane. The anti-root properties are obtained by adding phenoxy-fatty acid ester, a specific anti-root agent, to the polymer-bitumen compound. Once applied, STRATAGREEN forms a continuous barrier against roots.

As it does not contain film or double-reinforced foils, anti-root polyester is more flexible and malleable during application. The additive has been developed specifically as a root inhibitor, for both hot-laid bitumen and for torch-laid bitumen membranes.

FEATURES & BENEFITS

- Creates a barrier against roots
- Works with both hot-laid and torch-laid membranes
- Flexible and malleable application
- Improved resistance to both high and low temperatures



Primers

Vapour Barriers

Base Layers

Cap Sheets

EXPERT WATERPROOFING, SUSTAINABLE ROOFING, BESPOKE FABRICATIONS

☎ 01202 785200

✉ info@icbgroup.co.uk

💻 icbgroup.co.uk

📍 **UK Head Office**
Unit 9-11 Fleets Industrial Estate
Willis Way, Poole, Dorset BH15 3SU

Scotland Office
87 Calder Street, Coatbridge, ML5 4EY

Wales Office
Capital Business Park, Unit 5, Parkway,
Cardiff, CF3 2PU

Socials

