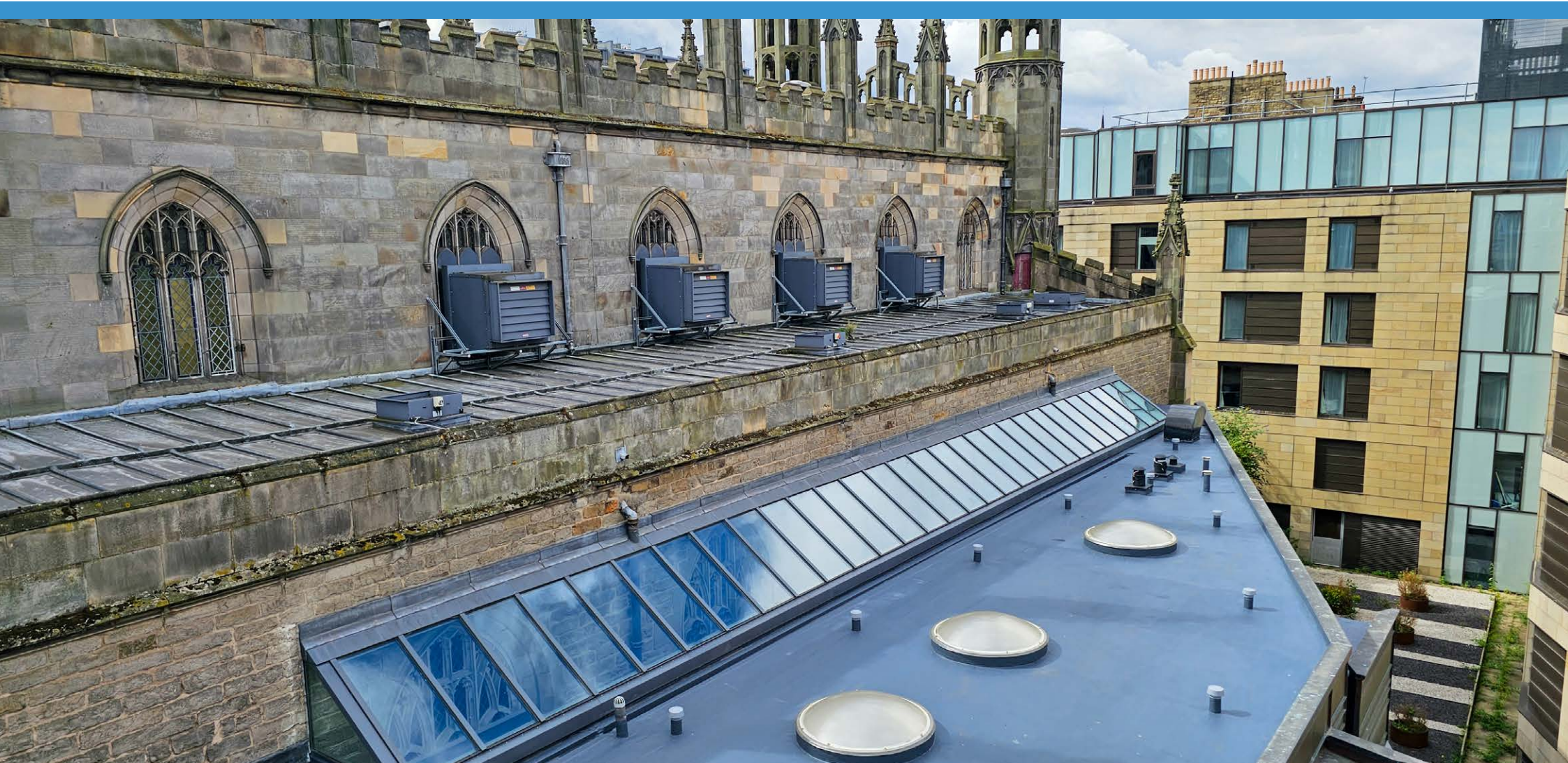




LIQUID APPLIED WATERPROOFING





# INTRODUCING FLEET

## ICB Waterproofing's range of Liquid Applied Waterproofing.

The FLEET PMMA Liquid Applied Waterproofing System is a high-quality solution for waterproofing a variety of applications, such as flat roofs, balconies, terraces, and multi-storey car parks. It directly moulds itself to the contours of the substrate with even the most difficult details easily dealt with. The system is known for its seamless membrane without joints, high elasticity, resistance to water, and flexibility, even at low temperatures. Its application process is straightforward, requiring no open flames, and it is UV resistant. The FLEET LAW system is 'Rain- Secure' in 30 minutes and once installed, it guarantees a life expectancy of up to 25 years and beyond (attested by the BBA).

**FAST** - In a country that rains as much as it does in the UK, you need a Waterproofing System that goes down fast and secures your building quickly – The Fleet Liquid Applied Waterproofing System is 'Rain- Secure' in 30 minutes. So even sudden downpours won't stop work from being completed.

**FLEXIBLE** - Every project is different, each with their own Waterproofing challenges. The Fleet Liquid Applied Waterproofing System literally moulds itself to the contours and changes of plane of the substrate. Even the most difficult details are easily dealt with. This flexibility ensures a watertight construction.

**FIXED** - Once installed you don't want to have to worry about how long the waterproofing solution will last. The Fleet Liquid Applied Waterproofing System attracts guarantees of up to 25 years and has an expected service life in excess of that, as attested by the BBA.

# WHY CHOOSE FLEET?

/ 3



## UV-Resistant

Provides long-lasting protection against harmful UV rays, preventing premature degradation.



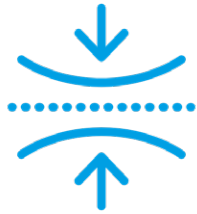
## Seamless and Watertight

The liquid application creates a continuous membrane without joints or seams, eliminating potential leak points.



## Versatile Application

Easily adapts to complex roof geometries, including penetrations and varying elevations.



## Durability and Flexibility

Withstands thermal expansion and contraction, maintaining structural integrity over time.



## Rapid Curing Times

Allows for faster project completion, reducing downtime and minimising disruption—even in colder temperatures.



## Aesthetic & Functional Versatility

Available in a wide range of colours with optional slip-resistant finishes, where safety and appearance matter.

# VARIETY OF DESIGNS

Fleet PMMA systems don't just protect—they elevate the design of any surface. With a wide selection of finishes and colours, architects and specifiers can combine performance with creativity.



## **SMOOTH FINISH -**

Achieve a clean, minimalistic look for a sleek finish.



## **TILE FINISH -**

Achieve the look of traditional tiling in a variety of ways.



## **TEXTURED COATS -**

Create a robust industrial feel for indoor or outdoor areas.



**SLIP RESISTANT FINISH -** Tailored for safety critical areas.



## **WOODEN DECK -**

Unique designs are available dependant on personal preference.



## **COLOURFUL FINISH -**

Available in a variety of colours. Email us for more info.

# VARIETY OF APPLICATIONS

/ 5

Fleet PMMA systems don't just adapt—they excel in every environment. From balconies and terraces to podium decks and green roofs, Fleet delivers high-performance waterproofing wherever it's needed.



## ROOF

- Flat Roofs
- Dome Roofs
- Detailing



## BALCONY

- Terraces
- Access Galleries
- Stairways



## PARKING

- Multi-storey
- Underground
- Ramps
- Garages



## TRAFFIC

- Roads
- Airports
- Bridges
- Podiums



## GREEN ROOFS

- Bio-Solar
- Drainage Channels
- Walkways



## SPECIAL

- Warehouses
- Spa/ Pool
- Animal Barns



# ROOF



# FLAT ROOFS, DOME ROOFS, DETAILING

/ 7

A high-performance, fully bonded solution for flat roofs—delivering long-term durability, flexibility, and enhanced energy efficiency.

Flat roofs come with unique challenges, particularly in achieving long-lasting waterproofing. Traditional materials often struggle with complex layouts, penetrations, and varying elevations. This is where liquid-applied waterproofing systems, especially PMMA (Polymethyl Methacrylate) liquid plastic, provide an exceptional solution. They conform seamlessly to any surface, shape, or material, delivering a fully tailored, watertight seal.

## CRACK BRIDGING FOR ENHANCED DURABILITY

Flat roofs are exposed to thermal expansion and contraction, which cause different materials, such as bitumen, concrete, and metal, to move at different rates. PMMA waterproofing systems are designed to bridge these movements effectively, ensuring reliable

adhesion and dynamic crack-bridging capabilities. These systems have been rigorously tested and verified according to ETAG 005 standards, guaranteeing long-term durability.

## MAXIMISING SOLAR ENERGY EFFICIENCY

A reflective finish on liquid-applied waterproofing not only protects the roof but also boosts the efficiency of solar panels by increasing light reflection. This enhanced reflectivity keeps roof temperatures lower, contributing to overall energy efficiency.

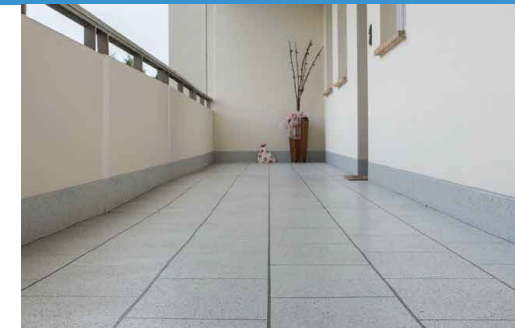
## ADVANTAGES

- ✓ Flexible in low temperatures
- ✓ UV resistant
- ✓ Seamless
- ✓ Fully bonded





# BALCONY





# TERRACES, ACCESS GALLERY, STAIRWAYS

/ 9

A versatile and cost-effective solution for balconies, combining reliable protection with aesthetic flexibility to meet both structural and design demands.

Balconies feature numerous detail connections and various substrate materials that require waterproofing. As an “extended living room,” balconies should meet homeowners’ aesthetic preferences regarding colour and surface design.

## PRESERVE AND MINIMISE COSTS

The low build-up height and strong adhesion to common materials like screed, concrete, tiles, wood, clinker, and metal enable safe renovation on the existing surface, reducing demolition costs.

## AESTHETICALLY PLEASING

The design options are as diverse as individual tastes. The solutions can be customised in various colours, textures, and surface patterns. A particularly popular

choice is the “tile-look” finish, combining the aesthetic appeal of tiles with easy maintenance. Best of all, personalised requests can be fulfilled cost-effectively, thanks to PMMA’s short curing times.

## BROAD RANGE OF SURFACE FINISHES

Walkways and staircases benefit from structured surfaces or slip-resistant coatings for added safety. A finish with quartz sand provides the best sealing and slip resistance in wet conditions.

## ADVANTAGES

- ✓ Load-bearing for point loads
- ✓ Easy to maintain
- ✓ Slip resistance options
- ✓ Various colour/ design options



# PARKING





# MULTI-STOREY, UNDERGROUND, RAMPS, GARAGES

/ 11

Delivers long-term protection and flexibility for parking structures exposed to heavy loads and extreme conditions.

Parking structures and underground garages differ significantly from traditional reinforced concrete buildings. Their properties closely resemble those of transportation structures, such as bridges. However, they must withstand extreme conditions for extended periods. Parking structures endure substantial stress over their lifecycle, including exposure to winter chlorides that corrode reinforcement and threaten structural integrity. Additional challenges include mechanical stress from heavier vehicles and extreme temperature fluctuations.

## ECONOMIC AND SAFE SOLUTIONS

To protect these structures, Fleet liquid plastics have proven to be an outstanding solution for both cost

efficiency and safety. Whether for rigid or highly crack-bridging coatings, low-traffic areas or high-frequency parking decks, simple wall connections or complex expansion joints, Fleet PMMA systems offer tailored solutions for every application.

## ADVANTAGES

- ✓ Flexible in low temperatures
- ✓ Highly resistant to mechanical stress
- ✓ Suitable for heated surfaces



# TRAFFIC





Offers rapid-curing, weather-independent waterproofing ideal for roads and engineering structures facing tight maintenance windows.

Roads and engineering structures are not only constantly exposed to meteorological stresses, they also have to cope with increasing traffic volumes. However, in such heavy traffic flow, it is difficult to impose sufficiently long closure times for necessary maintenance work.

## DRASTICALLY REDUCING CONSTRUCTION TIMES

Our PMMA products offer a maintenance solution for roads and engineering structures that significantly shortens construction times. The highly reactive PMMA resins cure quickly and can be optimally applied regardless of the weather, even at component temperatures of  $\geq 0^{\circ}\text{C}$ .

## COMPLIANT WITH REGULATIONS

Even for bridges and trough structures, a PMMA system can fully meet UK specifications for structural

waterproofing and repair. Fleet Coat 30 is BBA-certified, which ensures compliance with relevant UK standards, including those set by Highways England.

## CREATING DURABLE SOLUTIONS

PMMA products have extremely short drying times. They are not only highly resistant to mechanical stress but also resistant to chemicals and hydrolysis. They protect traffic infrastructure for decades against damaging influences such as de-icing salts and extreme weather conditions.

## ADVANTAGES

- ✓ Flexible in low temperatures
- ✓ Highly resistant to mechanical stress
- ✓ Abrasion-resistant



# GREEN ROOFS





# BIO SOLAR, DRAINAGE CHANNELS, WALKWAYS

/ 15

Delivers certified root resistance and long-lasting waterproofing, ideal for green roof applications of all types.

Green roofs bring a host of environmental and aesthetic benefits, but the presence of soil, vegetation, and consistent moisture demands a solution that can resist root penetration while maintaining a long-lasting seal. Applied seamlessly, Fleet products conform to any surface or substrate, providing a fully bonded, watertight membrane.

## ROOT-RESISTANT AND LIGHTWEIGHT

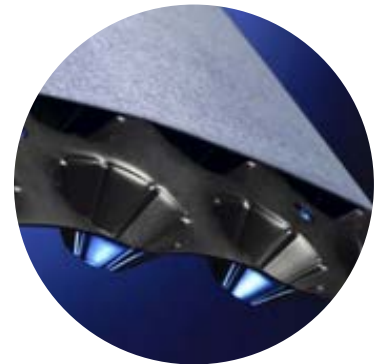
Fleet PMMA systems are certified to resist root ingress in line with FLL guidelines, protecting both the waterproofing and structure beneath. Their crack-bridging flexibility ensures long-term performance, even with structural movement. Lightweight and compatible with a wide range of green roof components, they're ideal for both new builds and refurbishments—whether extensive or intensive.

## PROVEN LONG-TERM PERFORMANCE

A standard build-up for a green roof involves Fleet Primer P, followed by a 'wet-on-wet' application of Fleet Coat 30 with reinforcement fleece. Once cured, a protection layer, such as PL Protection Fleece, is installed, followed by the FCP20 Drainage Board. This layered approach ensures durability and efficient water management while protecting the waterproofing system beneath.

## ADVANTAGES

- ✓ Root-resistant
- ✓ Seamless and fully bonded
- ✓ Durable under consistent moisture



FCP20 DRAINAGE BOARD



PL PROTECTION FLEECE

# SPECIAL PROJECTS





# WAREHOUSES, SPA / POOL, ANIMAL BARNS

/ 17

Excels in unconventional applications—providing high-performance waterproofing in areas where standard solutions fall short.

In addition to our core application areas, special projects play a key role in showcasing the full potential of Fleet PMMA. These projects demand exceptional performance, whether it's due to extreme loading conditions, unusual installation environments, or highly specific requirements.

Where conventional systems reach their limits, liquid-applied waterproofing solutions come into their own. From sealing joints in watertight concrete in new builds, to the restoration, Fleet systems deliver reliability and durability.

## VERSATILE FOR NEW CONSTRUCTION

The same technology that works for renovations is equally applicable in new construction. Many waterproof concrete manufacturers trust Fleet PMMA-based liquid waterproofing for securing joints.

## UNIVERSAL COMPATIBILITY

Fleet systems bond effectively to a wide variety of substrates—including asphalt, concrete, bitumen, screed, membranes, tiles, glass, wood, copper, and zinc. The key lies in the right surface preparation, tailored to the material.

Depending on the surface, we use techniques such as blasting, grinding, milling, or even light abrasion or cleaning. Absorbent substrates, for instance, are primed to ensure optimal adhesion and long-term performance.

## ADVANTAGES

- ✓ Root-resistant
- ✓ Seamlessly spans expansion joints
- ✓ Bonds to a variety of substrates

# SURFACE PREPARATION

Proper surface preparation is crucial for achieving long-lasting waterproofing. The following steps should be taken:



## Cleaning

Remove all dirt, debris, and contaminants to ensure proper adhesion.

Power washing or mechanical cleaning may be necessary for stubborn residues.



## Repair and Levelling

Patch any cracks, holes, or uneven surfaces to create a smooth base for the liquid application.



## Priming

Apply a suitable primer tailored to the roof's substrate (e.g., concrete, metal, or bitumen) to enhance adhesion.



## Drying

Ensure surface is completely dry before applying the liquid membrane, as moisture can compromise the integrity of the waterproofing layer.



## Detailing

Pay special attention to seams, joints, and penetrations by using reinforcement fabric with the liquid plastic to strengthen these vulnerable areas.



# PRODUCT APPLICATION

/ 19



## STEP ONE

Prepare the surface for application. Mix the **Fleet Primer** with the **Fleet Catalyst** and apply to all areas.



## STEP TWO

Apply **Fleet Juntion** and **Fleet Fleece** to all upstands, followed by **Fleet Coat 30** to the deck paying attention to seams, joints and penetrations.



## STEP THREE

While wet, lay the **Fleet Fleece** and reapply the **Fleet Coat 30** “wet-on-wet” to ensure a fully bonded application.



## STEP FOUR

Once fully dry, mix the **Fleet S2A and S2B** together and apply to area using a smoothing trowel.



## STEP FIVE

For the ‘tile-effect’, map the layout using tape. Then apply **Fleet Sealer Coat**, in the desired colour.



## STEP SIX

For the final look, while the top coat is still wet, sprinkle a layer of **Deco Chips** on top for the desired finish and remove the tape.

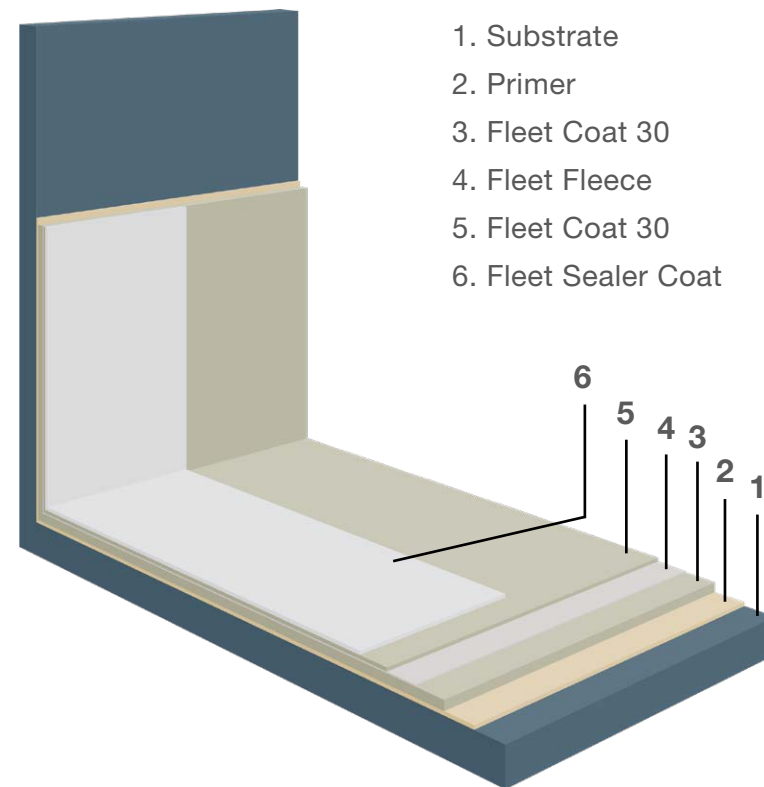
# SYSTEM BUILD UP: ROOF

Each construction project is unique. To make sure that the optimum, solution-oriented measures are taken, it is important to select the right combination of products.

## ROOF WATERPROOFING SYSTEM

This is specifically designed as a highly durable waterproofing system for roofs. Since it is applied as a liquid, it creates a seamless waterproofing system in which even complex roof penetrations can be incorporated securely and durably. The system is extremely weather-resistant, crack-bridging, flexible at low temperatures and its surface can be finished in any desired colour.

Contact us if you need technical help with the design.  
For technical datasheets on any of the products in our Fleet range, please visit: [icbwaterproofing.co.uk](http://icbwaterproofing.co.uk)





# SYSTEM BUILD UP: BALCONY

/ 21

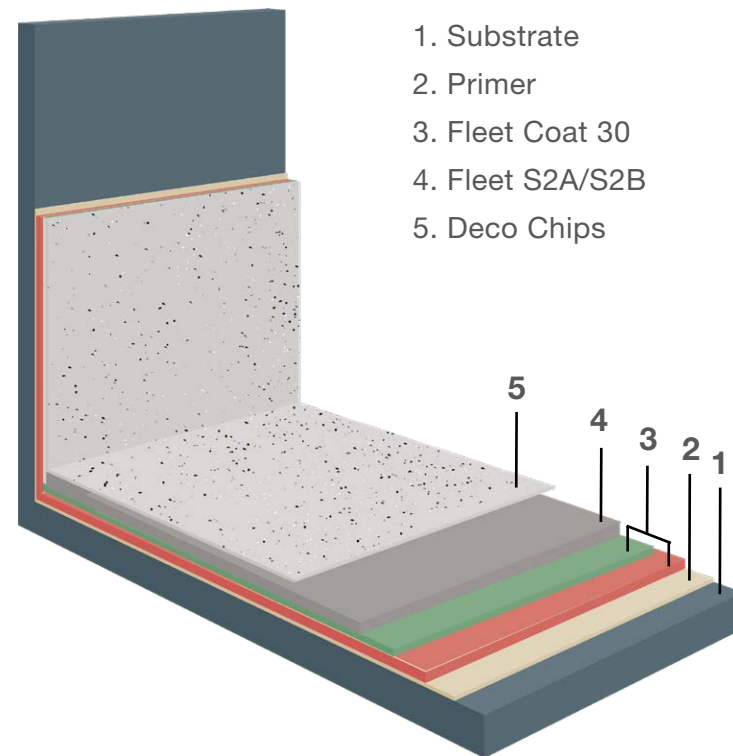
Thanks to Fleet PMMA's various properties, all the layers combine to create a 100% cross-linked bond, which means that there is no risk of delamination.

## BALCONY WATERPROOFING SYSTEM

This is a seamless, crack-bridging and joint-bridging waterproofing system that is able to withstand mechanical stress. It contains a highly flexible waterproofing layer as well as abrasion-resistant system layers for foot traffic.

Liquid application and secure adhesion to substrates allow all upstands on details to be waterproofed permanently and reliably. Surfaces can be finished in any colour and pattern.

Contact us if you need technical help with the design.  
For technical datasheets on any of the products in our Fleet range, please visit: [icbwaterproofing.co.uk](http://icbwaterproofing.co.uk)



# SYSTEM BUILDUP: PIPE DETAIL & OUTLET

When it comes to critical detailing, Fleet PMMA excels. Its easy applied liquid form allows for seamless integration around upstands, penetrations, and outlets, without any weak points.

Whether sealing pipe penetrations, drainage outlets, or vertical interfaces, Fleet forms a fully bonded, continuous membrane that flexes with the structure and resists water ingress at even the most complex junctions. This system is fully reinforced for long term durability, requiring no seams, laps or mechanical fixings. It's ideal for irregular shapes and tight corners.

1. Substrate

2. Primer

3. Fleet Junction

Fleet Fleece cut to size 1

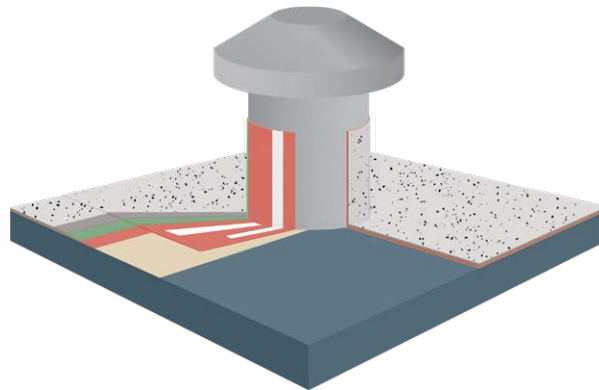
Fleet Junction

Fleet Fleece cut to size 2

Fleet Junction

4. Fleet Sealer Coat

5. Deco Chips



1. Substrate

2. Primer

3. Fleet Junction

Fleet Fleece cut to size 1

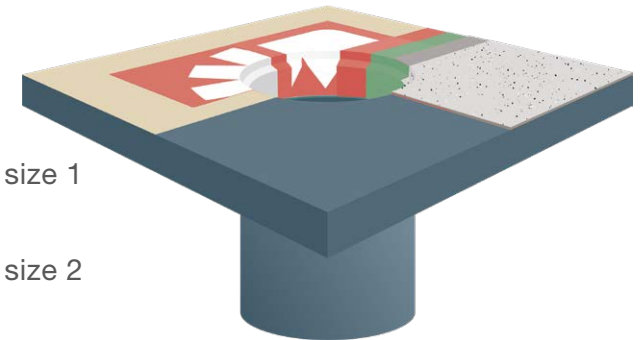
Fleet Junction

Fleet Fleece cut to size 2

Fleet Junction

4. Fleet Sealer Coat

5. Deco Chips





# PRODUCT TRAINING

/ 23

Advance your roofing skills and take our one day Fleet training course.

Develop both your practical and technical expertise.

**DO I HAVE TO BE APPROVED TO BUY/ INSTALL FLEET?** Yes, we require all who want to buy our PMMA Liquid systems to be trained.

**WHAT DOES THE COURSE INVOLVE?** The course is typically 5 to 6 hours long, depending on your experience and runs through the practical, health, safety & welfare training, with a Q&A to finish.

**HOW DO I APPLY?** Visit our training page on our ICB Waterproofing website. Your local Regional Technical Manager (RTM) will be in touch to perform an initial company assessment. This involves checking financial stability, location, reputation, and memberships. Once this has been successfully completed we will send

over all the course details, including dates, and an Application Form.

**HOW MUCH IS IT?** The course is £185 + VAT (please note if you have an older version of this brochure, the price may not be the same).

**HOW DO I PAY?** We will send you a proforma and a payment link. Payment is required in full before training can take place.

**WHAT HAPPENED AFTER THE TRAINING COURSE?** Your local RTM will periodically review the work of Approved Contractors to ensure standards are maintained.



EXPERT WATERPROOFING, SUSTAINABLE ROOFING, BESPOKE FABRICATIONS

 01202 785200

 [info@icbgroup.co.uk](mailto:info@icbgroup.co.uk)

 [icbgroup.co.uk](http://icbgroup.co.uk)

 **UK Head Office**  
Unit 9-11 Fleets Industrial Estate  
Willis Way, Poole, Dorset BH15 3SU

**Central Office**  
Unit 3 & 9, Headstocks Industrial Park,  
Merchant Way, Watnall, Nottingham  
NG16 1HA

**Scotland Office**  
87 Calder Street, Coatbridge, ML5 4EY

**Wales Office**  
Capital Business Park, Unit R5, Parkway,  
Cardiff, CF3 2PU



June 25