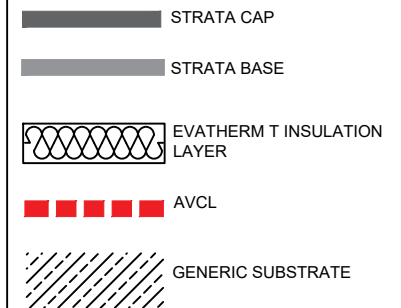


ANGLED FILLETS ARE TO BE USED WHERE REQUIRED.

KEY:



Notes:



Description:
STANDARD DETAIL FOR PARAPET
GUTTER

This is a standard generic detail and should be used for reference purposes only, and not form part of a specification document.

PRODUCT: STRATA STANDARD

Drawing Date:
JUNE 2021

Scale:
NTS

Drawing No: STR STD -01A	Rev. 2	Sheet 1 / 1
-----------------------------	-----------	----------------