

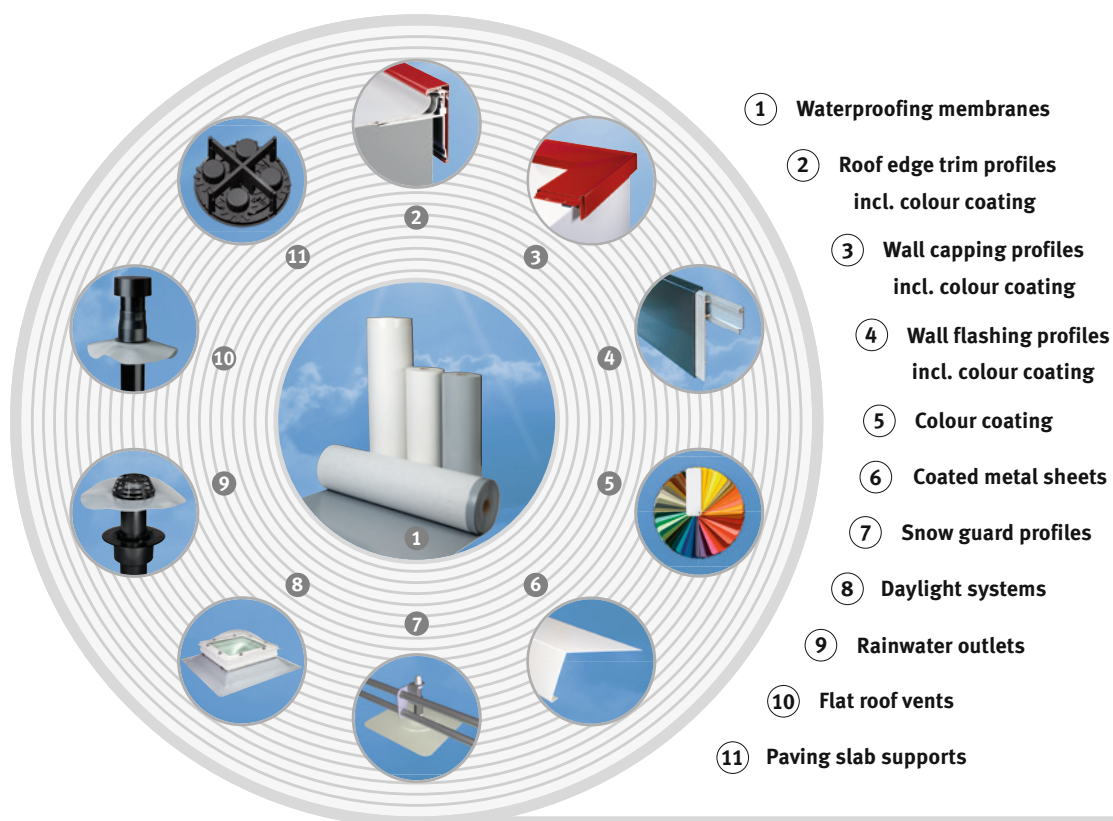
Roof edge trim profiles

T plus
TW 125 plus
TA
TA-4F
TAG
art-line 1



The alwitra waterproofing system

**Roof edge trim profiles are part of the proven alwitra product system.
This system comprises:**



Further information

For further information on scope of delivery and standard accessories, please refer to our current price list.

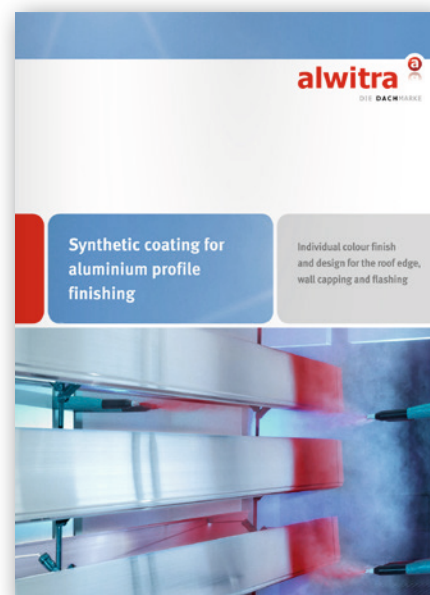
For additional technical information, please see our installation instructions and videos at

<https://alwitra.de/en/aluminium-profiles/roof-edge-trim-profiles/>

or scan the QR code.



For information on “Synthetic coating for aluminium profile finishing”, see separate brochure.



Roof edge trim profiles by alwitra

Contents

Roof edge trim profiles by alwitra	3
Information on design and execution	4–5
Roof edge trim profile	
T plus	6–7
Roof edge trim profile	
TW 125 plus	8–9
Roof edge trim profile	
TA	10
Roof edge trim profile	
TA-4F	11
Roof edge trim profile	
TAG	12–13
Roof edge trim profile	
art-line 1	14–15
Application Examples	16
Application technology service for designers and installers	17
Synthetic coating for aluminium profile finishing	18
The alwitra Colour World for aluminium profiles	19

From one roof edge to the other: As the market leader in high-quality roofing systems, alwitra provides all waterproofing components by way of an integrated system solution from a single source. Since the establishment of the company in 1964, alwitra has set new standards for the entire industry by introducing numerous product innovations. In particular, this is true for the patented and practically proven alwitra roof edge trim profiles.

They form part of the roof waterproofing and, particularly with an individually coloured coating, contribute to the overall architectural impression of the building.

alwitra roof edge trim profiles are

- industrially manufactured and ready to install
- suitable for all types of roof waterproofing (synthetic membranes or bituminous membranes)
- made of aluminium, EN AW 6060 resp. EN AW 5005 for TAG and art-line
- light-weight, corrosion resistant, recyclable
- with colour coating or anodised, if required
- compliant with standards and directives
- for straight or curved (on plan) roof edges without or with upstands (parapet)
- with a plain or specially formed finish and a front height of 80 to 1,050 mm
- bracket-profile-constructions with ready-to-install external and internal corners, stop ends and upstands
- for simple and time-saving installation

alwitra roof edge trim profiles offer unique advantages

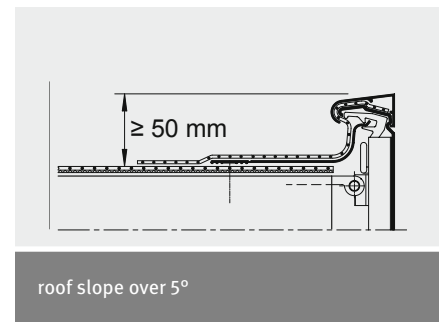
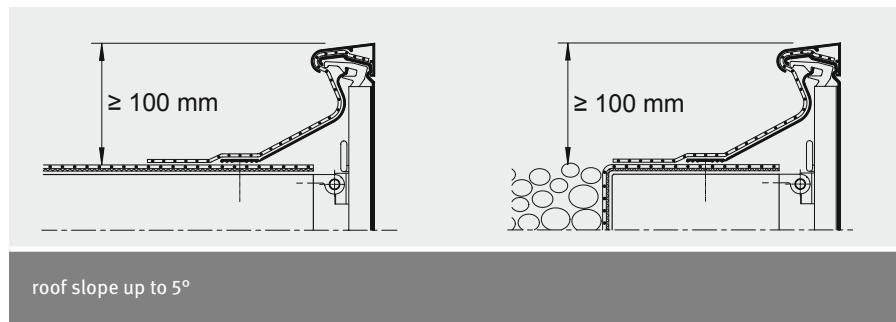
- long-time practically proven waterproof and tension-free flashing against the roof waterproofing
- maximum overflow protection and rain resistant butt joints ensured by cover profiles with slope towards the roof and by the use of an S-shaped tape formed the fillet plate
- fillet plates for in-line fastening as well as for protecting the roof waterproofing against wind uplift along the roof edge

Roof edge trim profiles

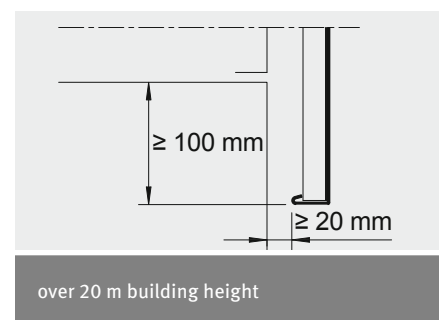
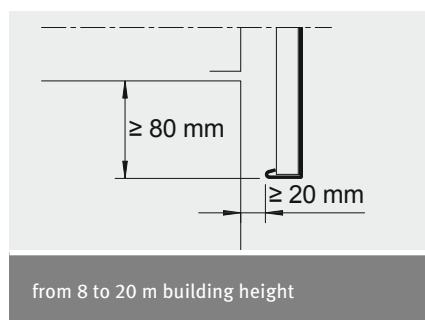
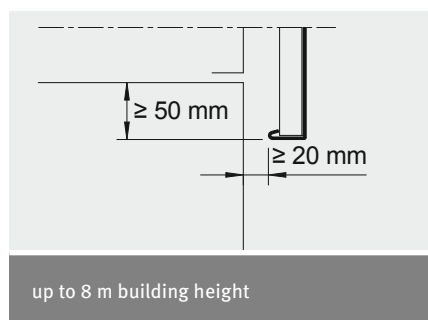
Information on design¹ and execution

Information on design and execution of roof edges with roof edge trim profiles

- 1 The height of the roof edge trim above the finished roof surface (roof waterproofing, gravel or slabs) should be approx. 100 mm or approx. 50 mm respectively.



- 2 The roof edge trim profile must overlap the upper edge of the render finish or the façade cladding by at least 50 - 100 mm. The drip edge must have a minimum distance of 20 mm from the building structure. Relevant guidelines of the facade trades (plasterers) require drip edge distances of 40 mm for walls with thermal insulation composite systems (ETICS) and for plastered walls ≥ 40 mm. National regulations apply.



- 3 The roof waterproofing must be taken to the outer edge of the upstand or roof area and fastened. Flashing against the roof edge trim profiles is to be carried out with the same material as used for the roof waterproofing. In the case of trafficked roof areas, the roof waterproofing sealing in the flashing area must be protected against mechanical damage.
- 4 Roof edge trim profiles must be designed and installed so as to not allow any impairment of the waterproofing resulting from thermal movements of the profiles. **>> see: the alwitra solution, p. 5**
- 5 The edge trim profiles, brackets and fasteners must be able to withstand normally expected wind loads.
- 6 In order to prevent negative impacts on the roof build-up, appropriate measures for taking up horizontal forces are necessary. The roof waterproofing is fixed to the supporting construction by in-line or linear fastening. **>> see: the alwitra solution, p. 5**
- 7 The brackets have to be sufficiently rigid and must not prevent thermal expansion of the profile. Bracket centres depend on the building height.
- 8 At corners and ends preformed details or manual processing (e. g. cutting, folding, welding) may be required.
- 9 Metal roof edge trim profiles being most often struck by lightning should be integrated into the lightning protection system.

¹ pursuant to the Technical Rules of the German Roofing Trade Association, DIN 18339, DIN EN 1991-1-4, DIN 18531. National regulations must be observed.

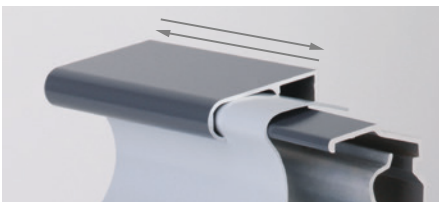
alwitra roof edge trim profiles offer unique advantages

With industrially manufactured alwitra roof edge trim profiles straight or curved (on plan) roof edges without or with upstands (parapet) can be designed in compliance with standards and directives.

alwitra roof edge trim profiles: permanently tension-free and waterproof flashing

» The alwitra solution for 4

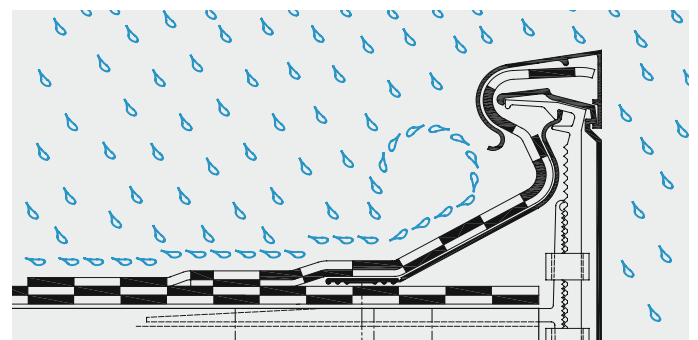
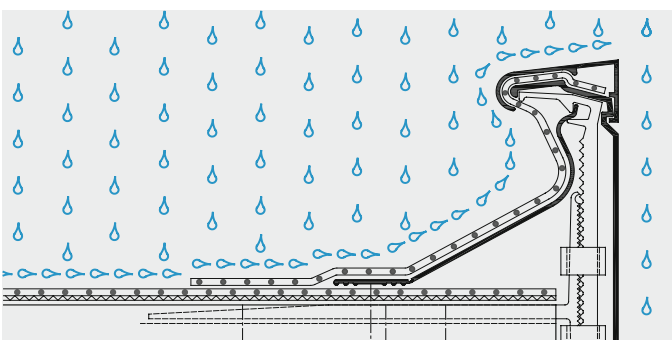
The tape is placed loose in the alwitra profile, however, it cannot slip out. The profile moves independently from the roof waterproofing and does not cause any tension. Stresses deriving from movements perpendicular to the roof edge can be absorbed by the S-shaped form of the tape without causing any damage. The flashing will remain permanently tension-free and waterproof.



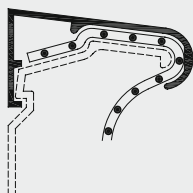
alwitra roof edge trim profiles: maximum overflow protection and rain resistant butt joints

» The alwitra solution for 6

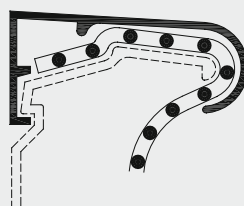
The fillet plate support is simply supported and slide-mounted in two brackets and mechanically fastened to the roof edge (fasteners at 250 mm centres). The inclined fillet plate installed between the roof area and the top of the bracket serves as a support for the tape and for in-line fastening as well as for securing the roof waterproofing against wind uplift along the roof edge.



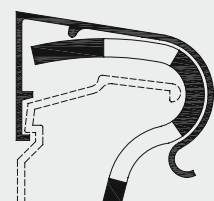
3 different varieties of top caps: 2,5 m long top caps in 3 different varieties for material-identical and tension-free flashing of the roof waterproofing; with mitred top cap sections for corners.



Standard top cap
Waterproofing membrane 1.5 mm



Large top cap
Waterproofing membrane up to 2.5 mm

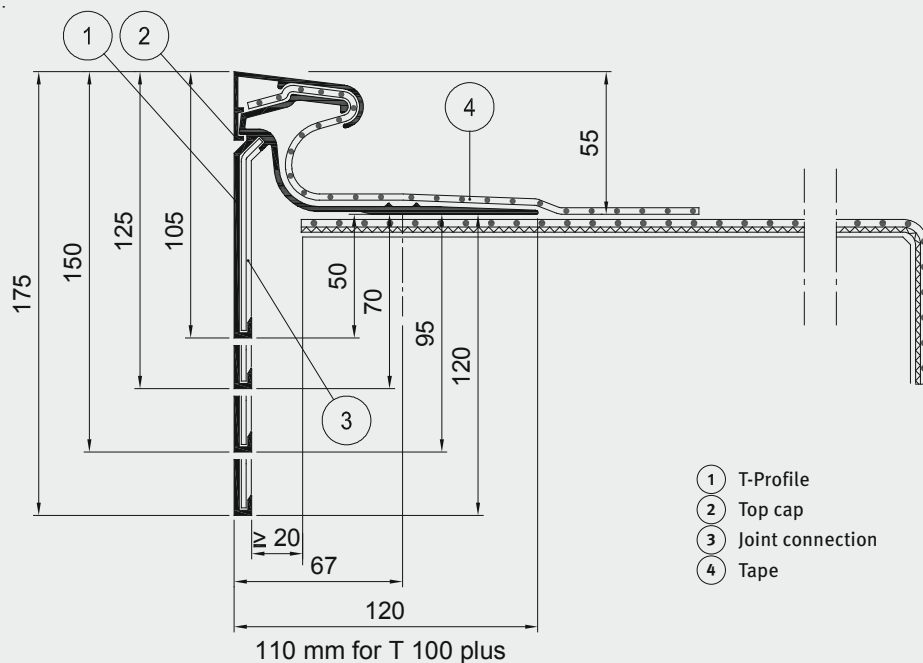


Top cap for bitumen sheet
Polymer bitumen sheet



Roof edge trim profile T plus

- two-piece extruded aluminium profile
- front height: 105 - 175 mm
- time-saving and easy installation
- for roof slopes $> 5^\circ$ or with parapet



alwitra roof edge trim profile T plus

- applicable on roof edges with upstands (parapet) and
- applicable on roof edges of roofs with a slope $> 5^\circ$
- two-piece extruded aluminium profile, corrosion resistant
- 2.5 m long top caps, EN AW 6060, for material-identical and tension-free flashing of the roof waterproofing
- 5.0 m long T-profiles, EN AW 6060, in 4 different front face heights (105, 125, 150, 175 mm)
- easy and quick installation by means of the pre-drilled horizontal leg
- rain resistant butt joints ensured by joining plates, permanently located at the centre of the joint
- incl. ready-to-install external and internal corners with 200 mm long corner legs
- with rigid horizontal leg for in-line fastening as well as for protecting the roof waterproofing against wind uplift along the roof edge

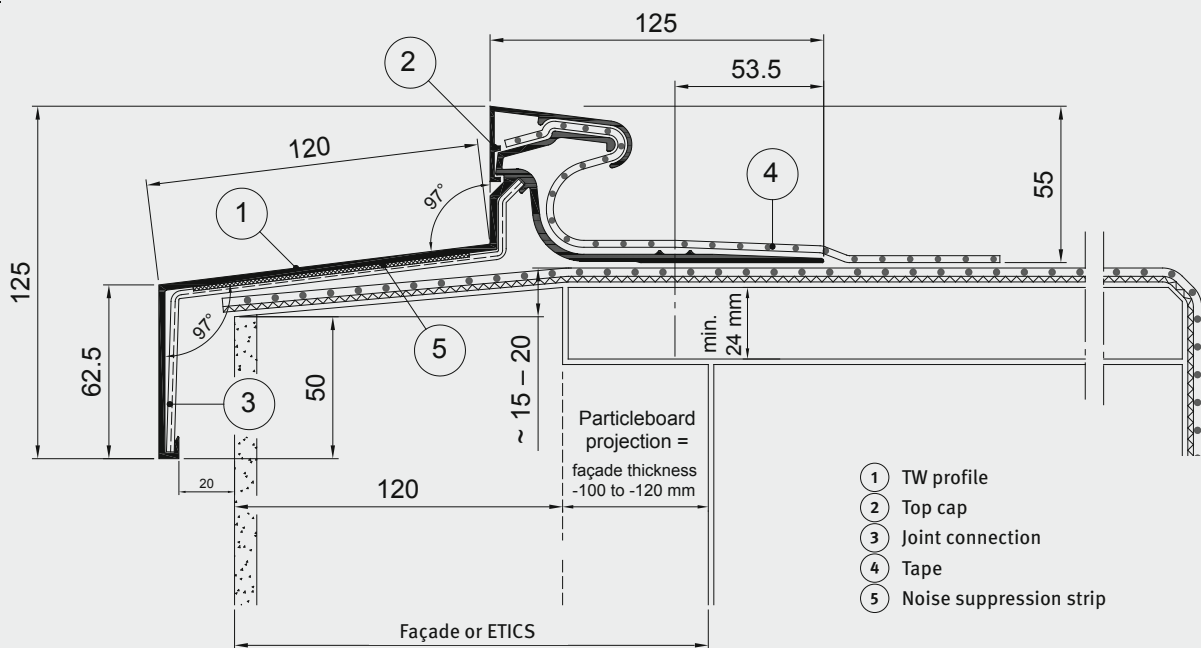
Roof edge trim profile T plus

Application examples



Roof edge trim profile TW 125 plus

- two-piece extruded aluminium profile
- time-saving and easy installation
- for an optically unobtrusive roof edge
- for covering façades and external thermal insulation composite systems
- for roof slopes $> 5^\circ$ or with parapet



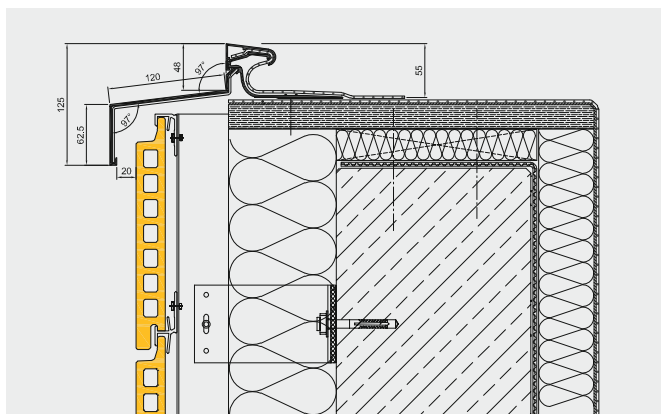
alwitra roof edge trim profile TW 125 plus

- applicable on roof edges with upstands (parapet)
- applicable on roof edges with timber hard edge
- two-piece extruded aluminium profile, corrosion resistant
- 2.5 m long T-profiles, EN AW 6060, with an overall height of 125 mm and a front face height of 62.5 mm
- 2.5 m long top caps, EN AW 6060, for material-identical and tension-free flashing of the roof waterproofing
- easy and quick installation by means of the pre-drilled horizontal leg
- rain resistant butt joints ensured by inserted joining plates, permanently located at the centre of the joint
- incl. ready-to-install external and internal corners with 200 mm long corner legs at the connection area
- with rigid horizontal leg for in-line fastening as well as for protecting the roof waterproofing against wind uplift along the roof edge
- quick and easy installation

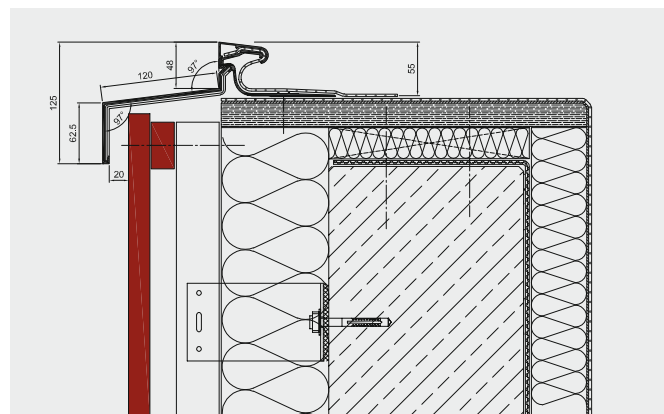
Roof edge trim profile TW 125 plus

Application examples

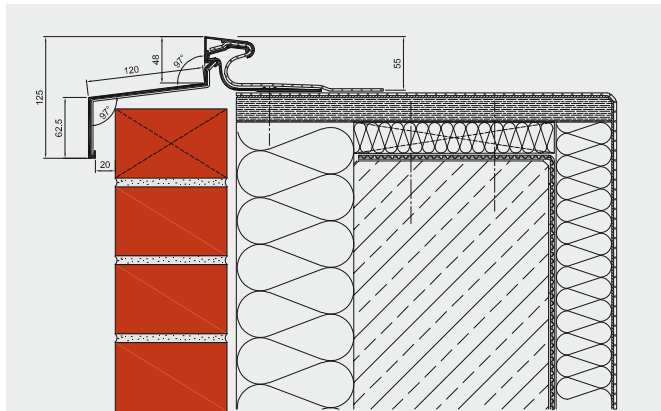
Moving the flashing against the roof waterproofing sealing towards the roof area allows for covering the façade or External Thermal Insulation Composite Systems (ETICS) by 50 mm¹ at a front height of 62.5 mm. The max. thickness of the façade or the external thermal insulation composite system is 120 mm. For thicknesses of more than 120 mm a plywood sheet (min. 24 mm thick), providing sufficient projection, should be installed to allow fastening of the trim profile.



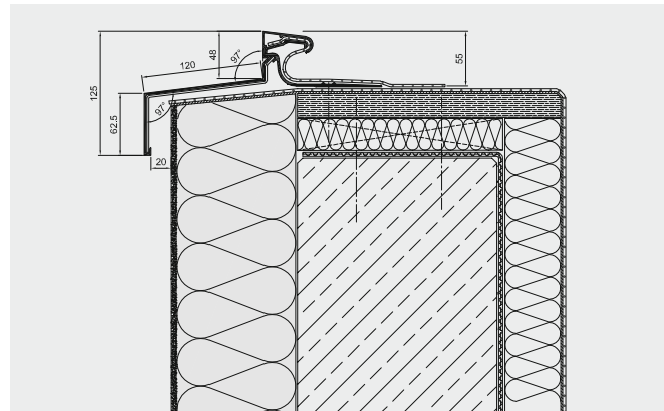
Installation over non-load bearing element (cladding)



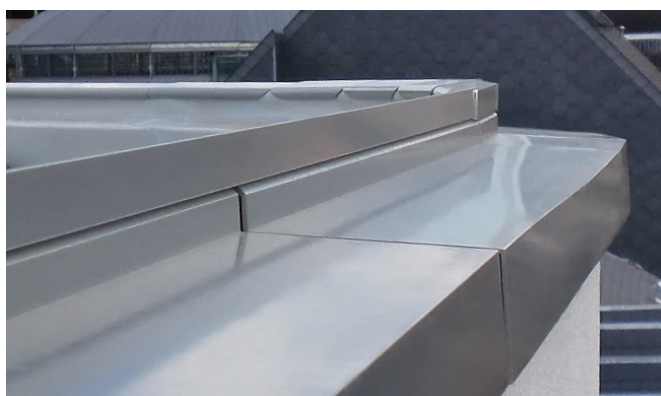
Installation over non-load bearing element (timber)



Installation over brick façade



Installation over External Thermal Insulation Composite Systems (ETICS)

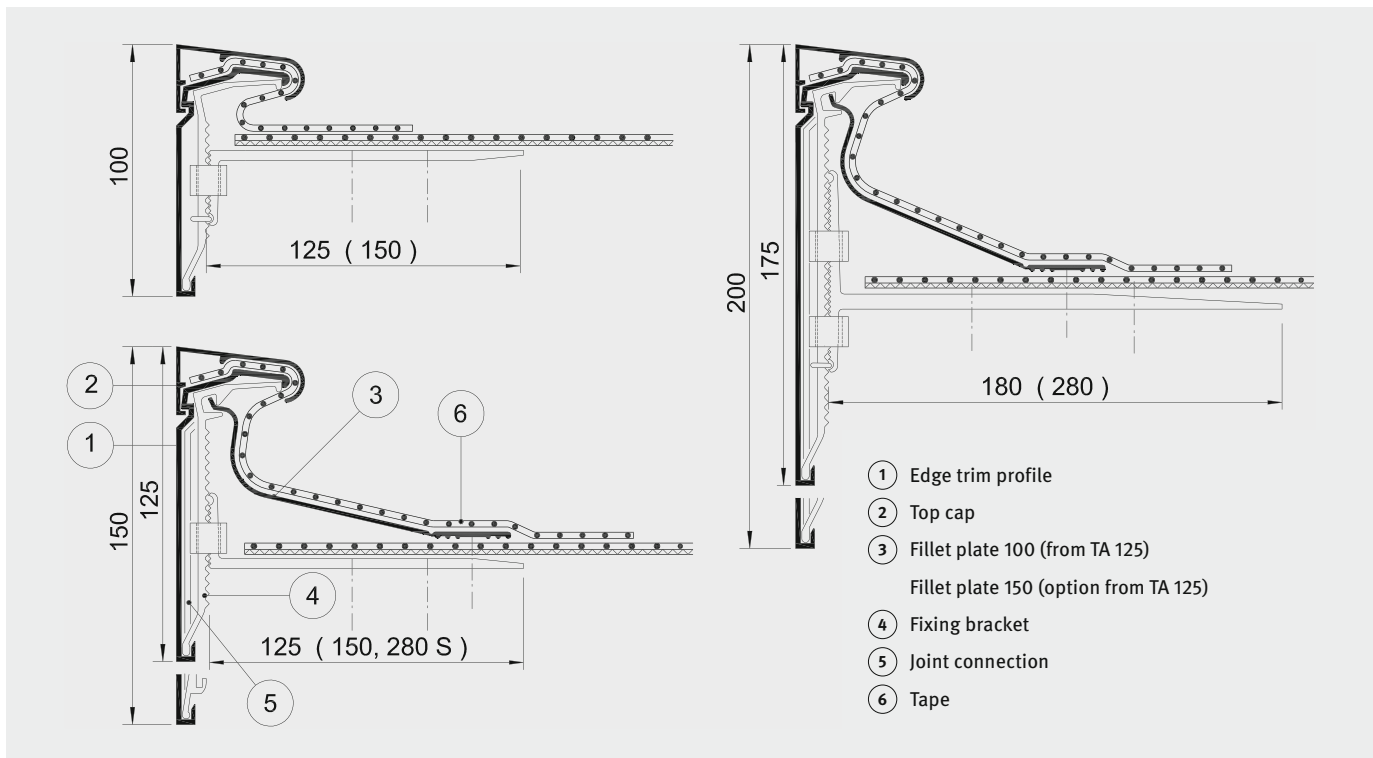


Note: With the flashing against the roof sealing being set back by 120 mm, rainwater in this area will drain off over the front surface of the profile!

¹ Overlap of 50 mm is in accordance with the German guidelines for up to 8.00 m building height. The corresponding national regulations apply.

Roof edge trim profile TA

- multi-piece extruded aluminium profile
- front face height TA: 100 - 200 mm
- with height-adjustable, horizontally moveable fixing brackets



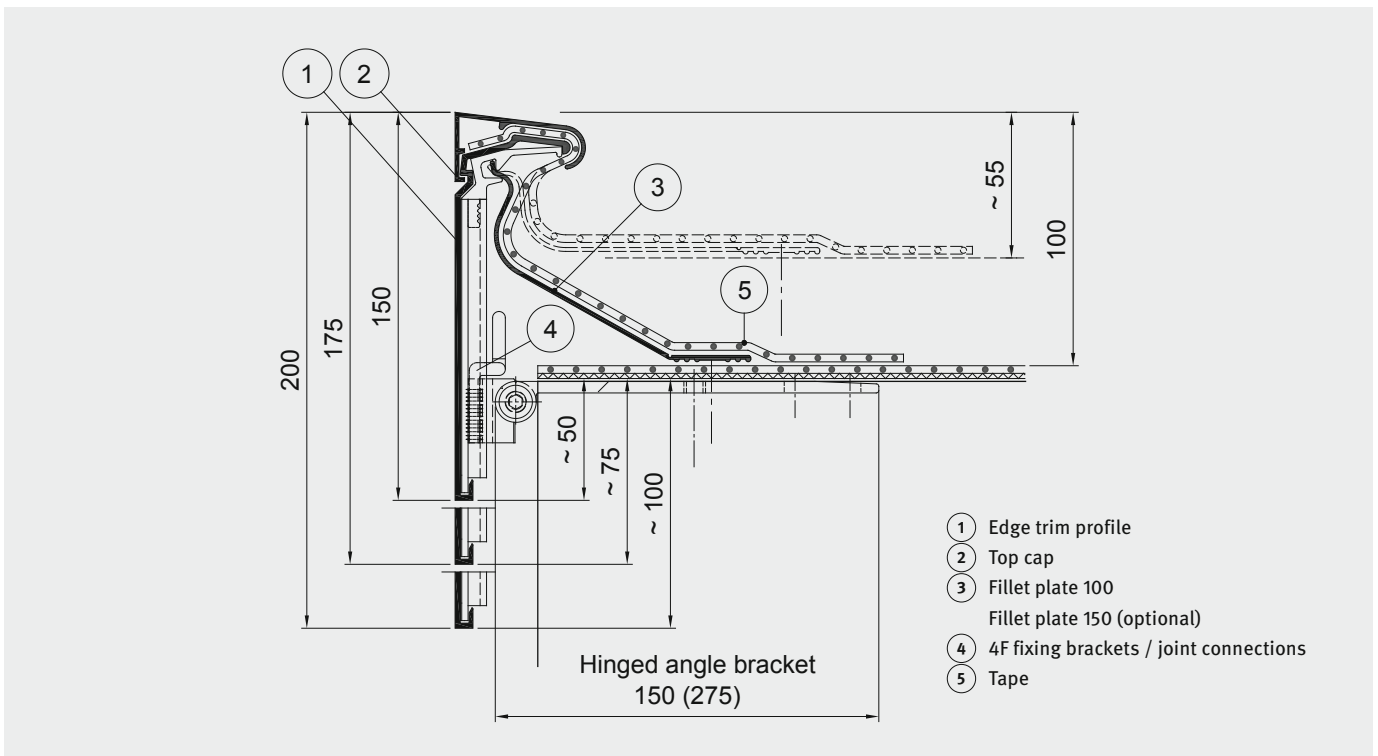
alwitra roof edge trim profile TA

- applicable on straight and curved (on plan) roof edges
- applicable on roof edges with and without upstands (parapet)
- applicable on roof edges with timber hard edge
- multi-piece extruded aluminium profile, corrosion resistant
- 2.5 m long top caps, EN AW 6060, for material-identical and tension-free flashing of the roof waterproofing
- with height-adjustable fixing brackets, EN AW 6060
- 5.0 m long profiles, EN AW 6060, front face height from 100 up to 200 mm
- with 2.5 m long fillet plates for in-line fastening as well as for protecting the roof waterproofing against wind uplift along the roof edge and S-shaped installation of the tape (from TA 125)
- rain resistant butt joints ensured by inserted joining plates, permanently located at the centre of the joint
- quick and easy installation



Roof edge trim profile TA-4F

- multi-piece extruded aluminium profile
- front face height TA-4F: 150 - 200 mm
- with patented 4F mounting fixing brackets
 - horizontally moveable, infinitely height adjustable, infinitely rotatable, infinitely adjustable angle



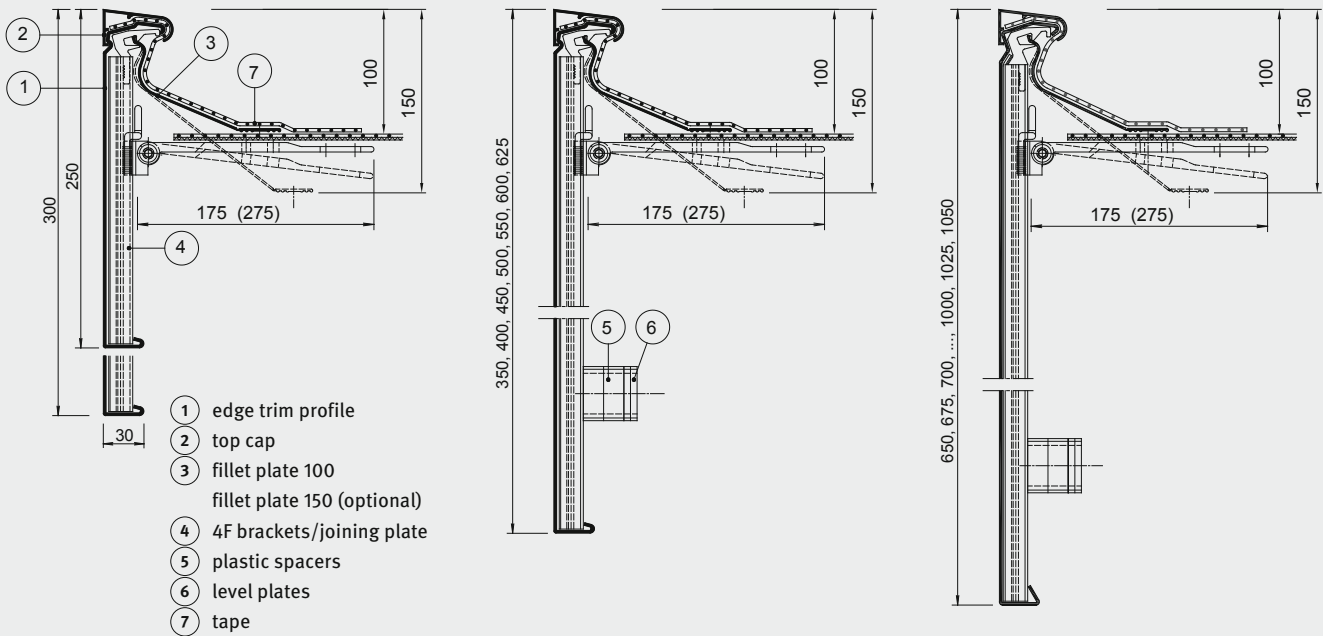
alwitra roof edge trim profile TA-4F

- applicable on straight and curved (on plan) roof edges
- applicable on roof edges with and without upstands (parapet)
- applicable on roof edges with timber hard edge
- multi-piece extruded aluminium profile, corrosion resistant
- 2.5 m long top caps, EN AW 6060, for material-identical and tension-free flashing of the roof waterproofing
- with infinitely height-adjustable, patented, rigid 4F fixing brackets / joint connections, EN AW 6063, with integrated seals
- 5.0 m long profiles, EN AW 6060, with a front face height of 150, 175 and 200 mm
- with 5.0 m long fillet plates for in-line fastening as well as for protecting the roof waterproofing against wind uplift along the roof edge and S-shaped installation of the tape
- quick and easy installation



Roof edge trim profile TAG

- multi-piece aluminium profile
- front face height: 250 - 1,050 mm
- supplied with patented 4F fixing brackets as standard
- horizontally moveable, infinitely height adjustable, infinitely rotatable, infinitely adjustable angle



alwitra roof edge trim profile TAG

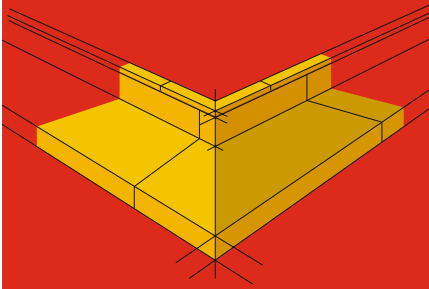
- applicable on straight and curved roof edges
- applicable on roof edges with and without upstands (parapet)
- applicable on roof edges with timber hard edge
- multi-piece cold-rolled aluminium profile, corrosion resistant
- 2.5 m long top caps, EN AW 6060, for material-identical and tension-free flashing of the roof waterproofing
- with infinitely height-adjustable, patented, rigid 4F fixing brackets / joint connections, EN AW 6063, with integrated seals
- 5.0 m long cold-rolled profiles, EN AW 5005, with a front face height of 250 to 625 mm
- 2.5 m long folded profiles, EN AW 5005, with a front face height of 650 to 1,050 mm
- with 5.0 / 2.5 m long fillet plates for in-line fastening as well as for protecting the roof waterproofing against wind uplift along the roof edge
- quick and easy installation

Roof edge trim profile TAG

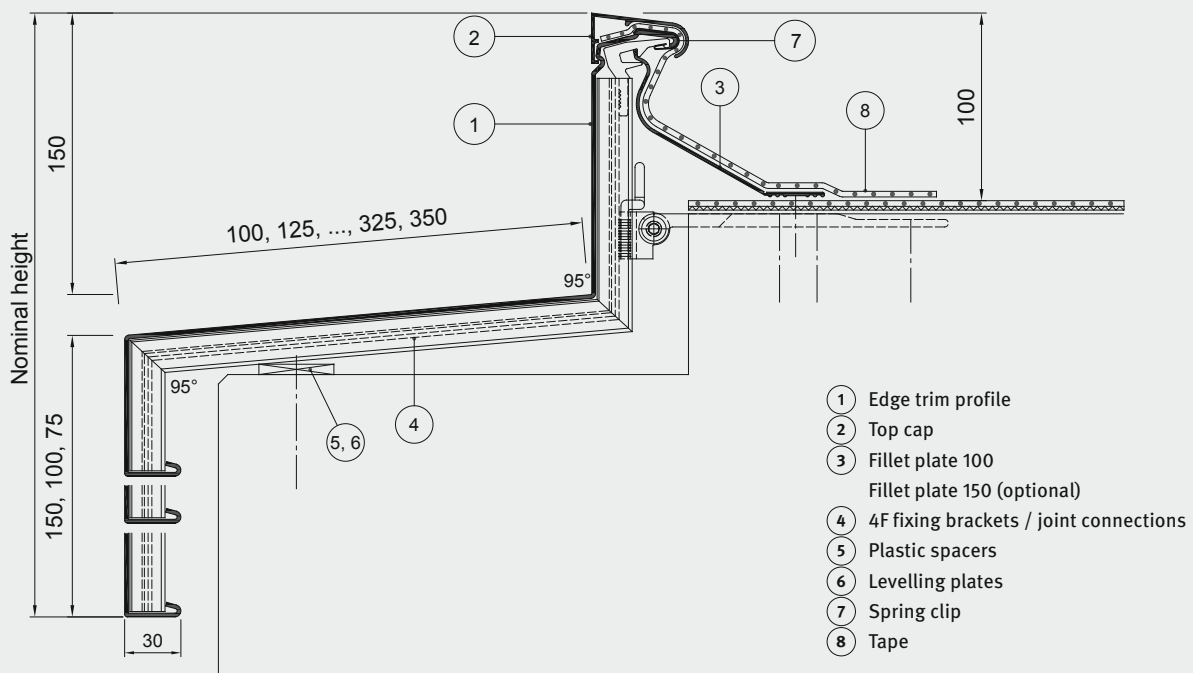
Application examples



Roof edge trim profile art-line 1



- multi-piece rolled and additionally bent aluminium profile
- for roof edges with a sophisticated design
- numerous varieties with a front face height from 75 to 150 mm
- supplied with patented 4F fixing brackets as standard
- horizontally moveable, infinitely height adjustable, infinitely rotatable, infinitely adjustable angle

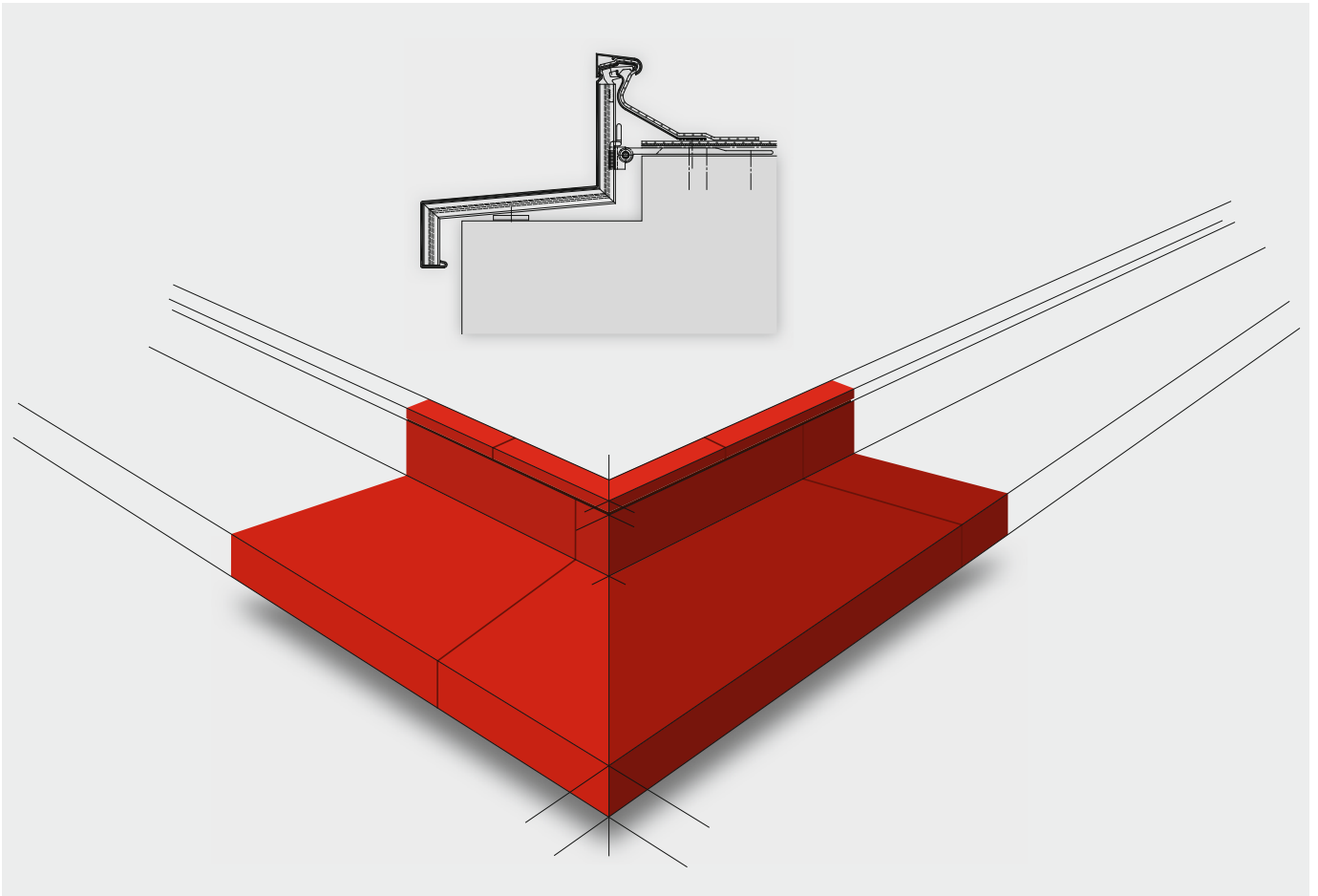


alwitra roof edge trim profile art-line 1

- applicable on roof edges with upstands (parapet) and staggered roof edges
- applicable on roof edges with timber hard edge
- multi-piece cold-rolled and additionally bent aluminium profile, corrosion resistant
- 2.5 m long top caps, EN AW 6060, for material-identical and tension-free flashing of the roof waterproofing
- with infinitely height-adjustable, patented, rigid 4F fixing brackets / joint connections, EN AW 6063, with integrated seals
- different varieties of 2.5 m long profiles, EN AW 5005
- with 2.5 m long flashing supports for in-line fastening as well as for protecting the roof waterproofing against wind uplift along the roof edge and S-shaped installation of the tape
- Other versions on request

Roof edge trim profile art-line 1

Application examples



Roof edge trim profiles Application examples



Application technology service for designers and installers

We are with you every step on your way from the design to the complete flat roof.

Quality roof waterproofing to us means not only long-term proven performance and reliability of our flat roof systems. For alwitra, providing application technology service for designers and installers is simply understood. Our experienced consultants, engineers and technicians will be glad to assist you for example with detailed installation plans for our aluminium profiles.

Application consultation for alwitra waterproofing systems

CAD details (.DXF/.DWG/.PDF)

comprehensive up-to-date CAD data base at <https://alwitra.de/en/flachdachatlas/>

CAD working drawings

installation plans for waterproofing membrane and installation plans for aluminium profiles

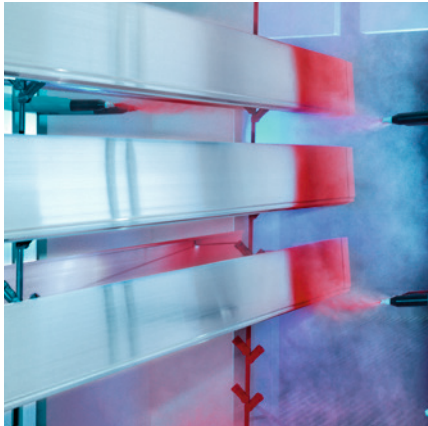
alwitra - your partner on the flat roof.



Synthetic coating for aluminium profile finishing

A new dimension of flat roof design!

alwitra is the only flat roof waterproofing manufacturer to offer both production and coating / finishing of aluminium profiles from a single source. For an even more specific and, in particular, timely realisation of your wishes and needs, we have started production on a new, worldwide unique powder coating line specially designed for our product range.



Good arguments in favour of coating and finishing alwitra aluminium profiles:

- **You will save time:**
One-stop production and coating of aluminium profiles result in optimised delivery times.
- **You will lend your buildings an unmistakable design:**
Aluminium profiles are available in a multitude of colours. On request, also with special effects.
- **You will increase the service life of your roof edge profiles, wall cappings and flashing profiles:**
The preferred colour coatings from the colour programme **alwitra select** are highly weatherproof (GSB Master), resistant to UV radiation and chemicals and extremely resistant against impact, scratches and abrasion.
- **You will benefit from unique high-tech production with a sophisticated colour finishing concept.**
- **Your aluminium profiles will keep their good looks:**
With regular care, the coated surfaces will remain unsoiled, smooth, dirt-repellent and easy to clean even after years.
- **You will contribute to preserving the environment:**
For coating of your aluminium profiles, we use energy-efficient, chrome and solvent free low-resource technology.
- **You will make use of our expertise from 45 years' experience in finishing and coating of aluminium profiles.**

The alwitra Colour World for aluminium profiles

25 permanently available, **highly weatherproof** preferred colour coatings (HWF, GSB-Master) provide the basis for the alwitra colour experience. With **alwitra select**, we offer you up-to-date high-demand colours and surface effects for a modern roof edge design.

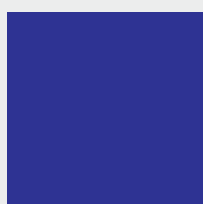
All other colours from the RAL CLASSIC colour range are available in façade quality (GSB standard).

For further information, <https://alwitra.de/en/aluminium-profiles/synthetic-coatings/>.

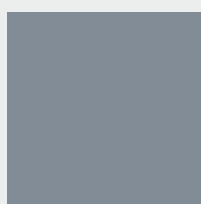
alwitra select



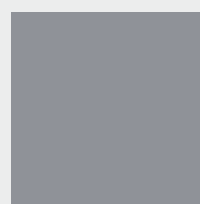
RAL 3020 traffic red
gloss, matt



RAL 5002 ultramarine blue
gloss, satin-gloss



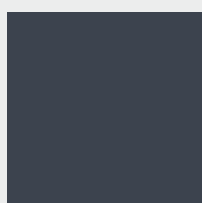
RAL 7001 silver grey
gloss, satin-gloss



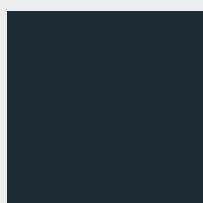
RAL 7004 signal grey
gloss, satin-gloss



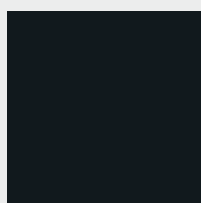
RAL 7012 basalt grey
gloss, satin-gloss



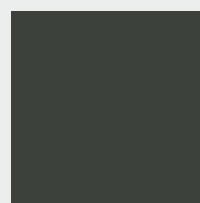
RAL 7015 slate grey
gloss, satin-gloss



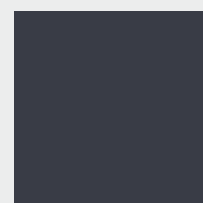
RAL 7016 anthracite grey
gloss, satin-gloss



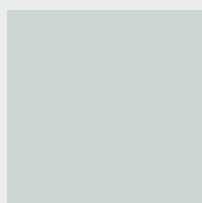
RAL 7021 black grey
gloss, satin-gloss



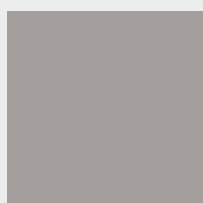
RAL 7022 umber
gloss, matt



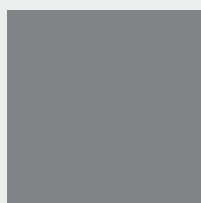
RAL 7024 graphite grey
gloss, satin-gloss



RAL 7035 light grey
gloss, satin-gloss



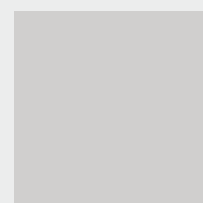
RAL 7036 platinum grey
glatt, seidenglänzend



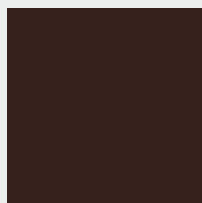
RAL 7037 dusty grey
gloss, satin-gloss



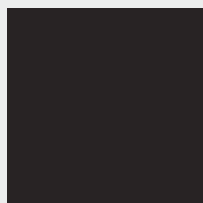
RAL 7039 quartz grey
gloss, matt



RAL 7047 telegrey 4
gloss, satin-gloss



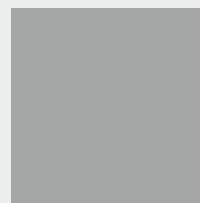
RAL 8017 chocolate brown
gloss, satin-gloss



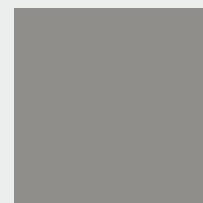
RAL 8019 grey brown
gloss, satin-gloss



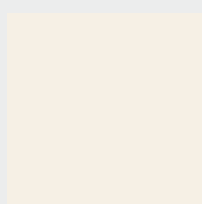
RAL 9005 jet black
gloss, satin-gloss



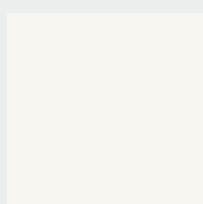
RAL 9006 white aluminium
Structure, matt, metallic



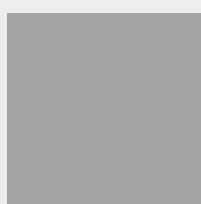
RAL 9007 grey aluminium
Structure, matt, metallic



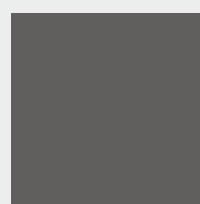
RAL 9010 pure white
gloss, satin-gloss



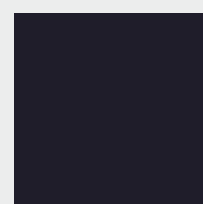
RAL 9016 traffic white
gloss, satin-gloss



DB 701
Structure, matt, metallic



DB 702
Structure, matt, metallic



DB 703
Structure, matt, metallic

The samples are printed versions of the original colours. Deviations in colour and gloss level reserved.

Exclusive alwitra partner in the UK:



Unit 9-11 Fleets Industrial Estate, Willis Way,

Poole, Dorset, BH15 3SU

Phone: 01202 785 200 · Fax: 01202 785 222

info@icbfabrications.uk.com · www.icbfabrications.uk.com



alwitra GmbH

54229 Trier · Germany

Phone: +49 651 9102-0 · Fax: +49 651 9102-248

export@alwitra.de · www.alwitra.de