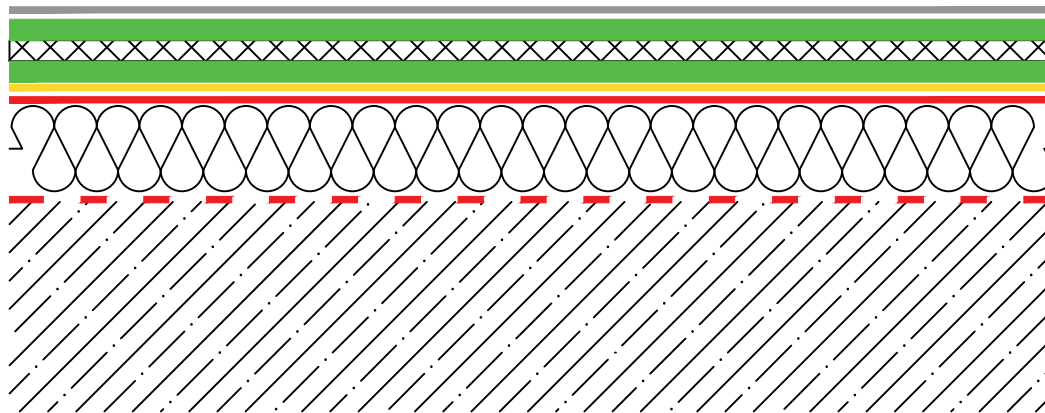
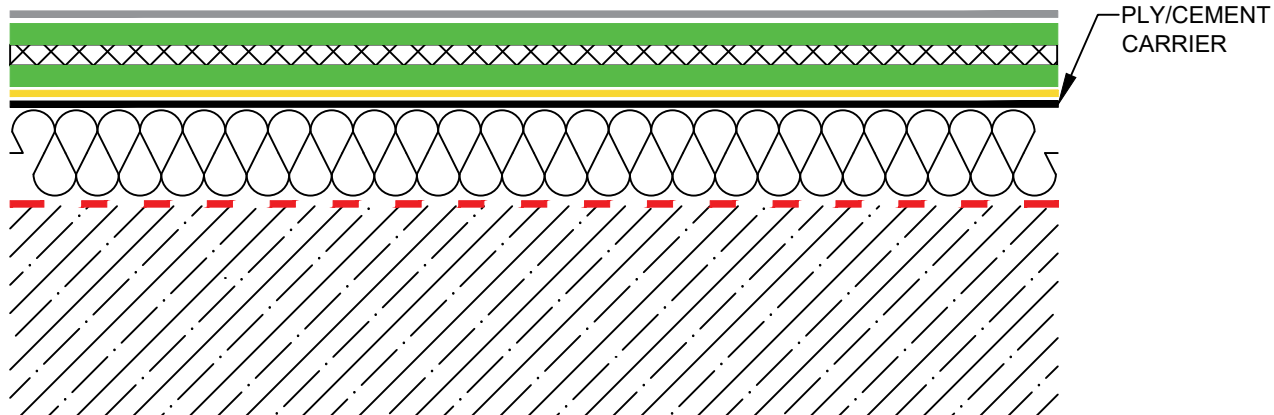


### MAIN AREA CARRIER SHEET



### MAIN AREA - PLY/CEMENT OVERLAY



#### KEY:

|  |                            |
|--|----------------------------|
|  | SEALER COAT (IF SPECIFIED) |
|  | FLEET FLEECE               |
|  | FLEET COAT 30              |
|  | FLEET JUNCTION             |
|  | FLEET PRIMER (SEE MATRIX)  |
|  | STRATAVAP CARRIER          |
|  | STRATAVAP AVCL             |
|  | EVATHERM A INSULATION      |
|  | GENERIC SUBSTRATE          |

#### Notes:

ALL FLEET LIQUID APPLIED WATERPROOFING SYSTEMS ARE TO BE INSTALLED BY AN ICB (WATERPROOFING) LTD APPROVED INSTALLER.

THE FLEET PRIMER MATRIX SHOULD BE CONSULTED FOR ALL PROJECTS TO ENSURE CORRECT PRIMER IS USED.

ADHESION TESTS MUST BE CARRIED OUT FOR ALL PROJECTS



#### Description:

MAIN AREA WITH CARRIER SHEET

This is a standard generic detail and should be used for reference purposes only, and not form part of a specification document.

#### PRODUCT:

FLEET  
LIQUID APPLIED MEMBRANE

#### Drawing Date:

MAY 2021

#### Scale:

NTS

#### Drawing No.

FLEET STD -01A

#### Rev.

2

#### Sheet

1 / 1