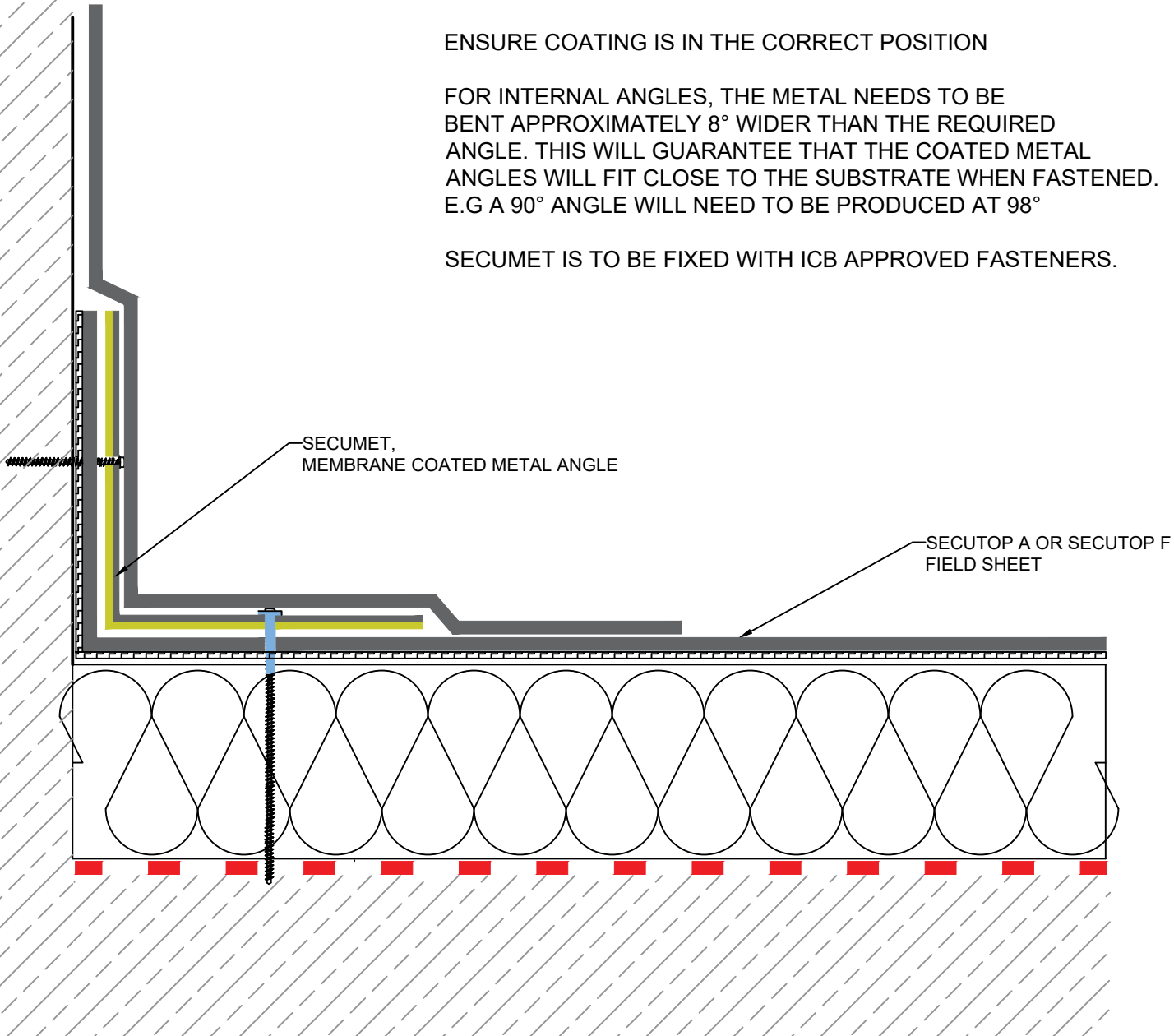


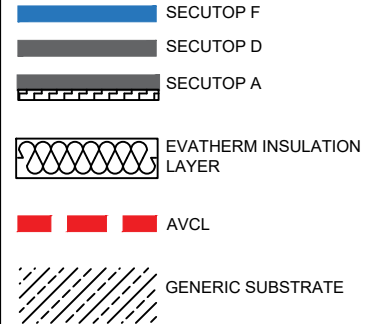
ENSURE COATING IS IN THE CORRECT POSITION

FOR INTERNAL ANGLES, THE METAL NEEDS TO BE BENT APPROXIMATELY 8° WIDER THAN THE REQUIRED ANGLE. THIS WILL GUARANTEE THAT THE COATED METAL ANGLES WILL FIT CLOSE TO THE SUBSTRATE WHEN FASTENED. E.G A 90° ANGLE WILL NEED TO BE PRODUCED AT 98°

SECUMET IS TO BE FIXED WITH ICB APPROVED FASTENERS.



KEY:



Notes:



Description:
STANDARD DETAIL FOR SECUMET
ANGLES

This is a standard generic detail and should be used for reference purposes only, and not form part of a specification document.

PRODUCT:
SECUTOP SINGLE PLY

Drawing Date:
SEPTEMBER 2021

Scale:
NTS

Drawing No: SEC STD - 06.1	Rev. 2	Sheet 1 / 1
-------------------------------	-----------	----------------