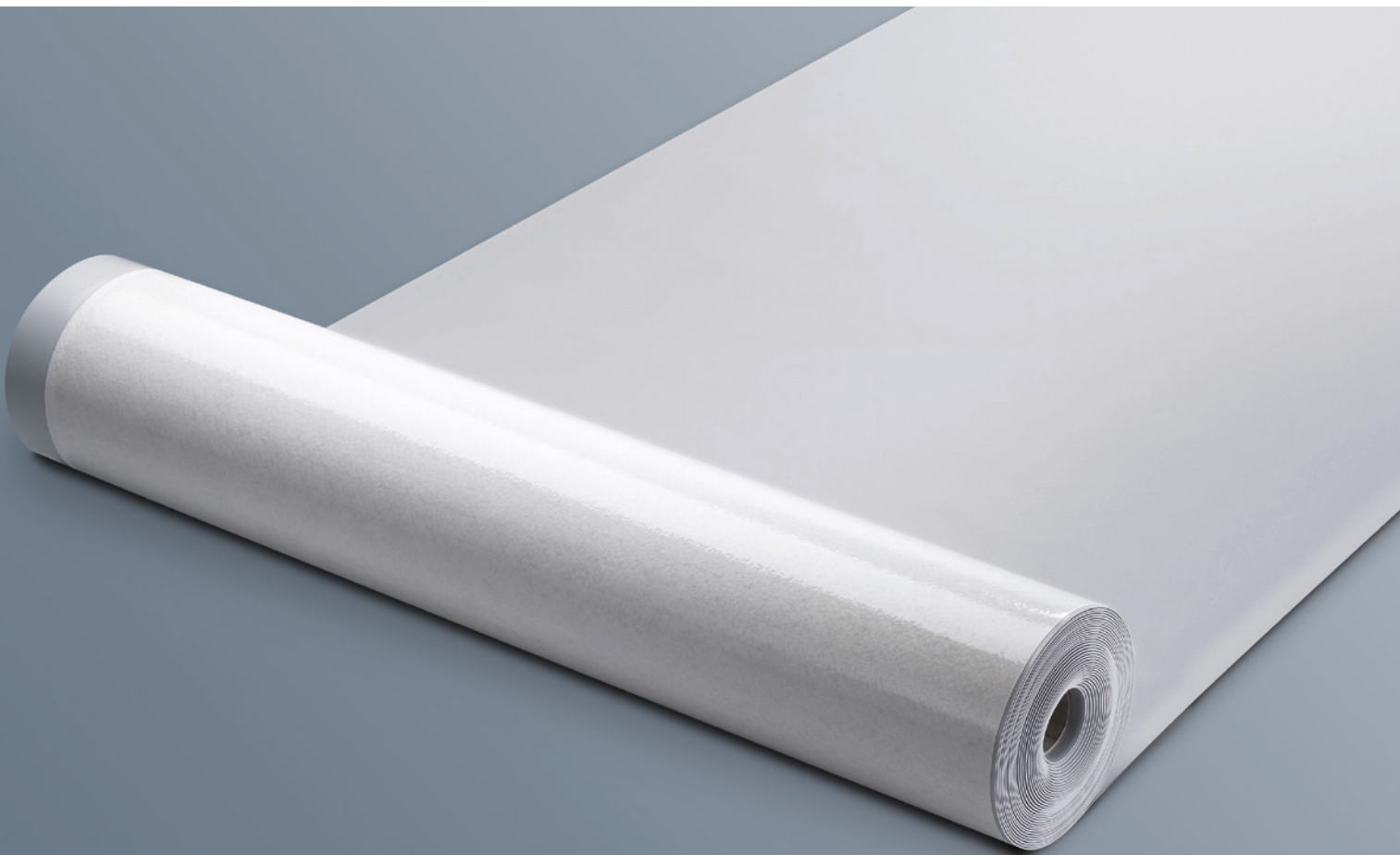


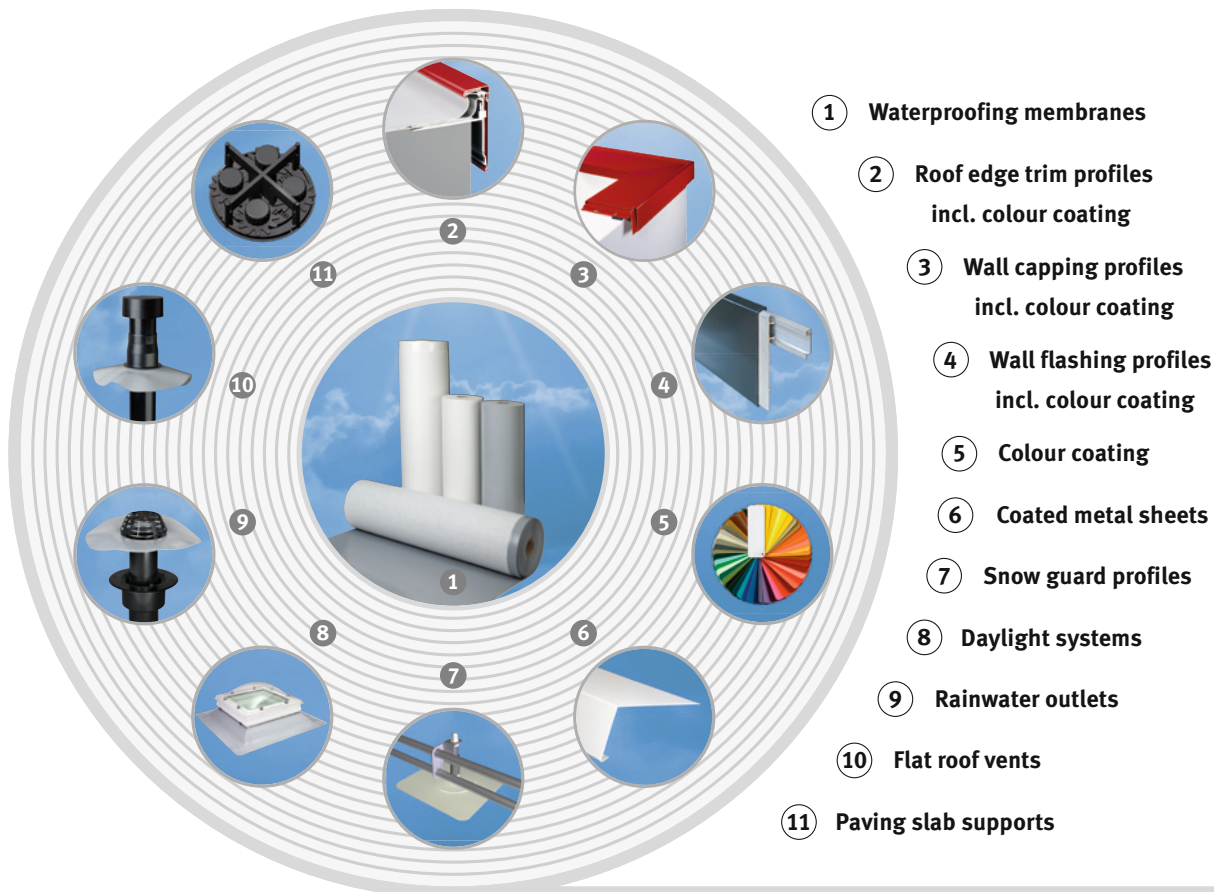
**EVALON® VSK**  
**Self-adhesive Water-**  
**proofing Membranes**

In accordance with  
Environmental Product  
Declaration supporting  
IBU guidelines



## The alwitra waterproofing system

**EVALON® VSK waterproofing membranes are part of the proven alwitra waterproofing system. This system comprises of:**



alwitra was the first enterprise of the industry to introduce relevant Environmental Product Declarations of the Institute Construction and Environment (Institut Bauen und Umwelt e. V. - IBU) for the EVALON® and EVALASTIC® waterproofing membranes.

For certifications according to DGNB, LEED or BREEAM alwitra provides appropriate product fact sheets.



# EVALON® VSK

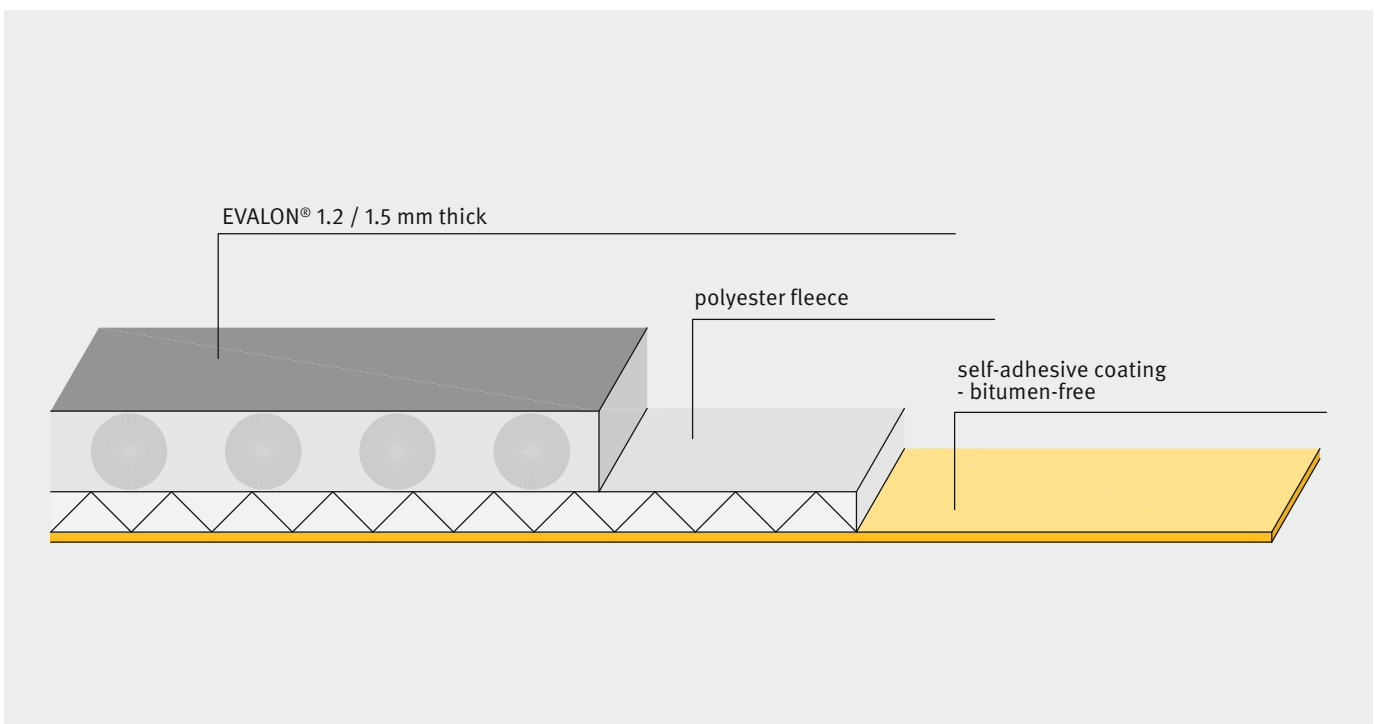
## Safe and secure in all applications

The fleece backed synthetic waterproofing membrane with bitumen-free self-adhesive coating



- **with self-adhesive underside coating**  
bitumen-free and solvent-free
- **optimal vapour pressure compensation function of the polyester fleece backing**
- **allows diffusion – even with self-adhesive coating**
- **high adhesive strength**  
the self-adhesive coating adheres to many standard building substrates
- **efficient laying**  
no adhesive to be applied – fast and safe
- **ideal also for steep slope roof areas (e. g. shed or arched roofs)**  
time-saving and clean laying
- **white and light-coloured self-adhesive membranes**, heat reflecting
- **no fire hazard**  
cold bonded application without open flame

**EVALON® VSK** membranes are based on our long-term proven alwitra roofing system. The waterproofing membrane has both a polyester fleece-backing and a synthetic adhesive compound coating. After laying, the fleece-backing also reduces stress and strain on the system (vapour decompression, movement compensation, etc.). The coating is bitumen-free and solvent-free and covered with a protective film when delivered. Product and system audits are carried out according to the requirements of the European Standards DIN EN 13956 and DIN EN 13967 and provide the basis for the entitlement to CE marking.

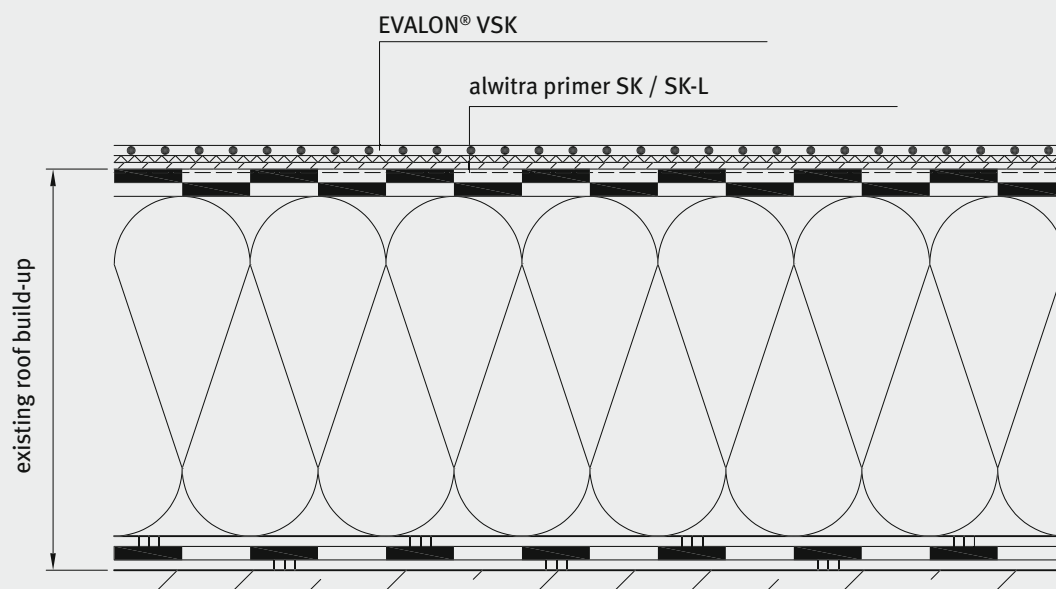


**EVALON® VSK** membranes are 1.05 m wide and produced with a non-coated welding edge on one side. Thus, a homogeneous welding in the seam area is guaranteed.

## EVALON® VSK

### Safe and secure in all applications

#### Application examples



Refurbishment



Private House, Welschbillig, Germany

#### Application

Waterproofing of roofs and/or buildings with bonded laying - without additional application of adhesives and without open flame. The underside coating of the EVALON® VSK adheres to many standard building substrates, e. g. bituminous membranes, concrete.



## Efficient bonding without fire hazard



Fig. 1: precoating with alwitra primer



Fig. 2: peeling off the protective foil



Fig. 3: pulling the protective foil to one side and pressing on, removing any blisters



Fig. 4: welding the membrane with the alwitra solvent welding machine



Fig. 5: welding with the hot air welding machine

### Efficient bonding without fire hazard

Depending on the condition of the substrate, precoating with alwitra wash primer SK / SK-L is required (fig. 1).

After unrolling and alining the membranes, peel off 80 to 100 cm of the protective foil from one end of the membrane (fig. 2).

Fix the membrane end by bonding, pull the protective foil to one side from underneath the membrane, and at the same time press on the membrane with a broom over the whole width and remove any blisters (fig. 3).

Seal-weld the overlapping longitudinal edge homogeneously and form the end joints (fig. 4 + 5).

In combination with self-adhesive EVALON® VSKA tapes, flashings and cappings are also perfectly sealed without additional application of adhesives: windproof, economic and safe.

**Additionally, the general installation instructions for EVALON® waterproofing membranes must be observed.**

## Technical Data EVALON® VSK waterproofing membranes, self-adhesive

**Excerpt**  
**Tests according to DIN EN 13956 and DIN EN 13967**

| Properties  | Testing method     | Unit           | Result <sup>a</sup>   |
|---|--------------------|----------------|---|
| Visible defects   | EN 1850-2          |                | passed  |
| Effective thickness ( $e_{\text{eff}}$ ) of the waterproofing layer | EN 1849-2          | mm             | 1.2 / 1.5   |
| Water tightness   | EN 1928 (B)        | kPa            | $\geq 400$  |
| External fire performance   | ENV 1187           |                | class B <sub>ROOF</sub> (t1) + (t3) + (t4)<br>confirmed by General Building Construction Supervision Test Certificates <sup>b</sup> |
| Reaction to fire  | EN 13501-1         |                | class E   |
| Joint peel resistance   | EN 12316-2         | N/50 mm        | $\geq 150$ <sup>c</sup>   |
| Joint shear resistance  | EN 12317-2         | N/50 mm        | $\geq 400$ <sup>c</sup>   |
| Max. tensile force  | EN 12311-2 (A)     | N/50 mm        | $\geq 500$  |
| Elongation at max. tensile force                                    | EN 12311-2 (A)     | %              | $\geq 60$   |
| Resistance to impact load   | EN 12691 (A)       | mm             | $\geq 300$  |
| Resistance to static load   | EN 12730 (B)       | kg             | $\geq 20$   |
| Tear resistance   | EN 12310-1         | N              | $\geq 300$  |
|   | EN 12310-2         | N              | $\geq 150$  |
| Resistance to root penetration                                      | EN 13948           |                | passed <sup>d</sup>   |
| Dimensional stability   | EN 1107-2          | %              | $\leq 1$  |
| Low temperature flexibility   | EN 495-5           | °C             | $\leq -30$  |
| Durability (UV exposure, high temperatures and water)               | EN 1297            | visual control | passed  |
| Durability of water tightness against artificial ageing             | EN 1296<br>EN 1928 | kPa            | $\geq 60$   |
| Durability of water tightness against chemicals incl. water         | EN 1847<br>EN 1928 | kPa            | $\geq 60$   |
| Hail resistance   | EN 13583           | m/s            | $\geq 30$   |
| Water vapour permeability   | EN 1931            | $\mu$          | approx. 20,000  |
| Bitumen compatibility   | EN 1548            |                | passed  |

<sup>a</sup> Minimum requirements without specified tolerances

<sup>c</sup> Hot air welding

<sup>b</sup> Valid for the respective tested build-up

<sup>d</sup> Waterproofing layer and seam welding identical with EVALON® unbacked

The results contained in this document are taken from tests and comply with the current standards as of 01/2018.  
 Normal tolerances apply.

# EVALON® VSK

## Safe and secure in all applications



Willow Grange, Betchworth, England

### EVALON® VSK

The waterproofing with reliable and efficient self-adhesive technique

- optimal vapour pressure compensation function of the polyester fleece or glass/polyester fleece backing
- ideal also for steep slope roof areas
- no fire hazard – bonded without open flame

### Supply specifications EVALON® VSK membranes

|  |                               |                 |
|--|-------------------------------|-----------------|
| <b>Thickness (mm)</b><br>(without backing and self-adhesive coating) | 1.2 / 1.5                     |                 |
| <b>Width (m)</b>   | 1.05                          | 1.55            |
| <b>Lengths (m)</b>   | 20 <sup>1</sup> / 25          | 20 <sup>1</sup> |
| <b>Standard colours</b>  | white, light grey, slate grey |                 |
| <b>Special colours</b>   | on request                    |                 |

<sup>1</sup> Only available for EVALON® VSK slate grey

### Specifications alwitra primer for EVALON® VSK

|                    | alwitra primer                 |                                |
|--------------------|--------------------------------|--------------------------------|
|                    | SK                             | SK-L                           |
| <b>Base</b>        | dispersion, solvent-free       | SBS rubber, solvent-containing |
| <b>Consistency</b> | liquid, rollable and brushable | liquid, rollable and brushable |
| <b>Colour</b>      | blue                           | red                            |
| <b>Containers</b>  | 10 L / 25 L                    | 10 L / 25 L                    |



Hotel Garni Muttler Alpinresort & Spa, Samnaun, Switzerland



Teahouse Mikado, Timmendorf, Germany

Exclusive alwitra partner in the UK:



ICB (Waterproofing) Ltd.

Unit 9-11 Fleets Industrial Estate, Willis Way,

Poole, Dorset, BH15 3SU

Phone: 01202 785 200 · Fax: 01202 785 201

info@icb.uk.com · www.icb.uk.com



**alwitra** GmbH & Co.

54229 Trier · Germany

Phone: +49 651 9102-0 · Fax: +49 651 9102-248

export@alwitra.de · www.alwitra.de