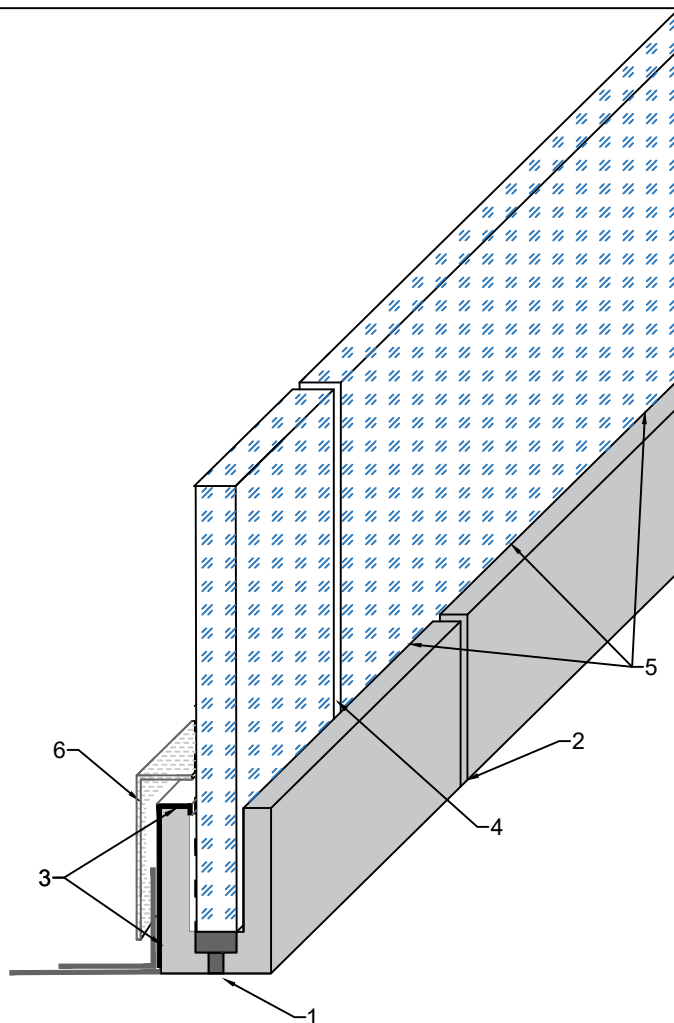
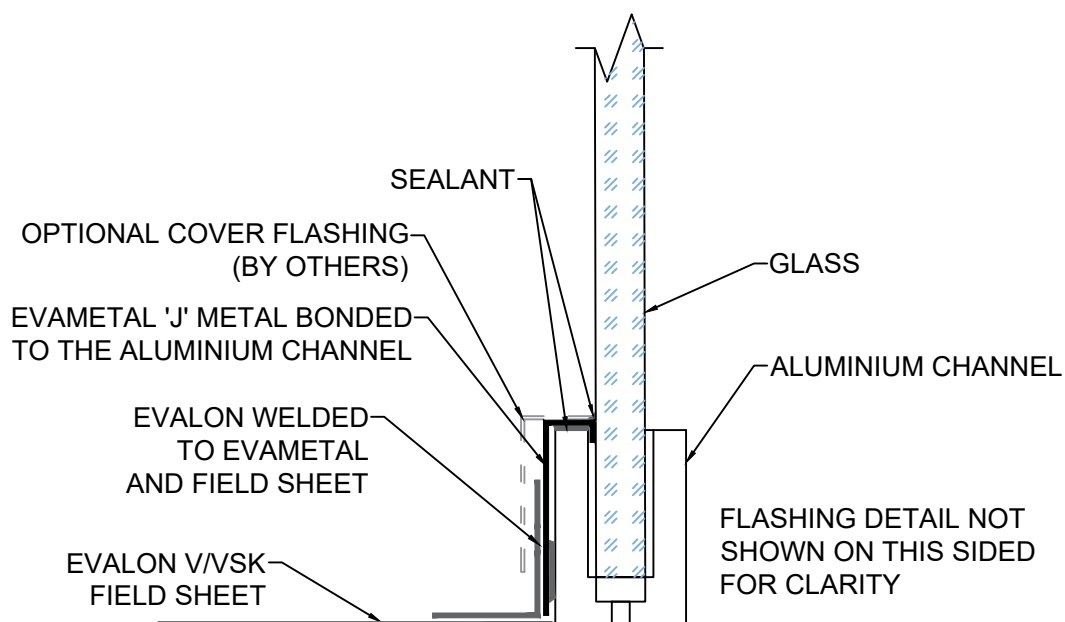


### IMPORTANT NOTE:

It is advisable to fix the 'U' channel direct to the building structure (steel beam, etc) **without** any waterproofing membrane underneath it. If membrane is underneath it it will have a tendency to make the balustrade rock and be unstable. Please check with the Structural Engineer and Glass Balustrade installer.



When installing a glass balustrade using an aluminium channel, there is always a chance of water ingress in vulnerable places, unless it is totally sealed.

#### Sealing Instructions

1. Generally the channel is fixed through the bottom of the channel. in this instance, sealant needs to be applied to the underside of the hole and into the bolt hole.
2. Where joins in the channel occur, sealant should be applied on the bottom and on the join itself before the glass is installed
3. Apply sealant to the top underside of the 'J' trim and bond to vertical face of the channel.
4. Where possible, apply sealant to the joins of the glass within the channel.
5. Totally seal along the outside edge of the glass to the flashing.
6. Optional Cover Flashing (by others)

Notes:



Description:  
GLASS BALUSTRADE CHANNEL

This is a standard generic detail and should be used for reference purposes only, and not form part of a specification document.

PRODUCT: ALWITRA  
EVALON V/VSK

Drawing Date:  
JUNE 2021

Scale:  
NTS

Drawing No: EVA STD-12.5	Rev. 2	Sheet 1 / 1
-----------------------------	-----------	----------------