

GLAZING SPECIFICATION:
Sealed double glazing units comprising of:
XX.X mm - XXXXX - Outer Pane
16.0 mm - Argon Filled Air Gap - Cavity
XX.X mm - XXXXX - Inner Pane

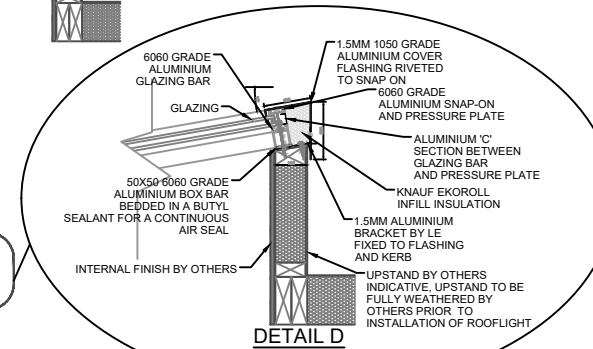
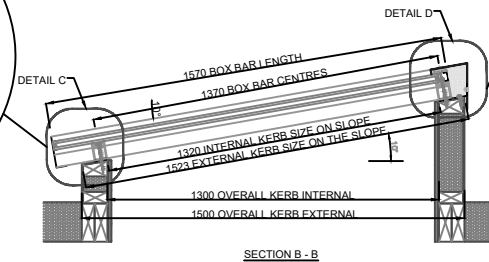
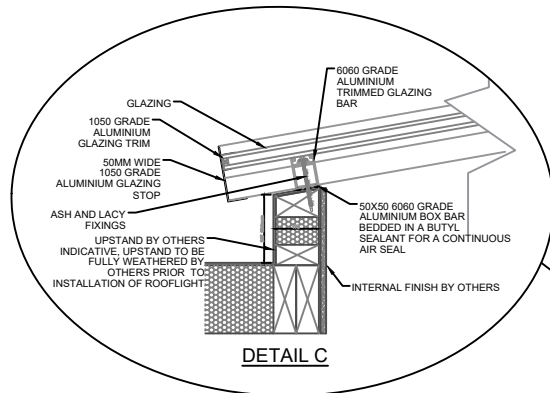
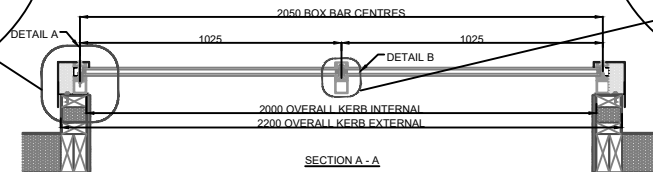
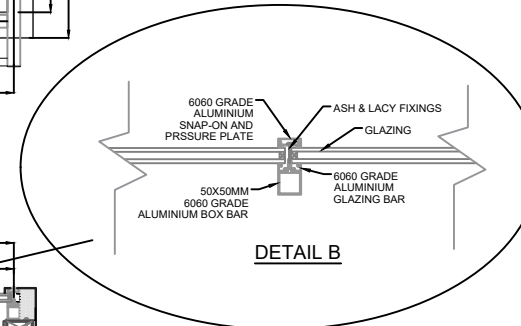
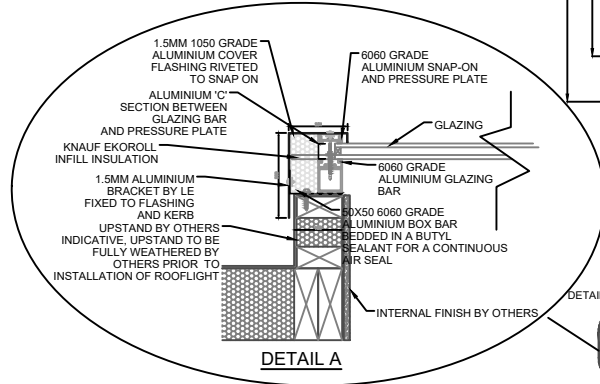
U value inner pane = 1.1 W/m²K
U value overall = 1.4 W/m²K

FRAME:
Frame, Fixings, Flashing etc. Polyester powder coated
Standard RAL colour: RAL T.B.C.

ACTUATOR:
Model: WMU ***
Stroke: ***mm
Voltage: 24v
Current: *A
Width: ***mm

ROOFLIGHT STANDARDS:
All systems are tested at BRE / UKAS accredited stations & manufactured to:

BS EN 6375 - Weather Tightness
BS EN 1026 - Air Permeability
BS EN 1027 - Water Tightness of glass rooflights
Class B to ACR(M)001:2014 Test for fragility of roofing assemblies
CWCT TN66/67 (Class II) Non-Fragility tested for applicable rooflight



Notes:



Description:
EVALITE MONOPITCH

This is a standard generic detail and should be used for reference purposes only, and not form part of a specification document.

PRODUCT: ALWITRA
EVALON V/VSK

Drawing Date:
JUNE 2021

Scale:
NTS

Drawing No: EVA STD -7.5	Rev. 2	Sheet 1 / 1
-----------------------------	-----------	----------------