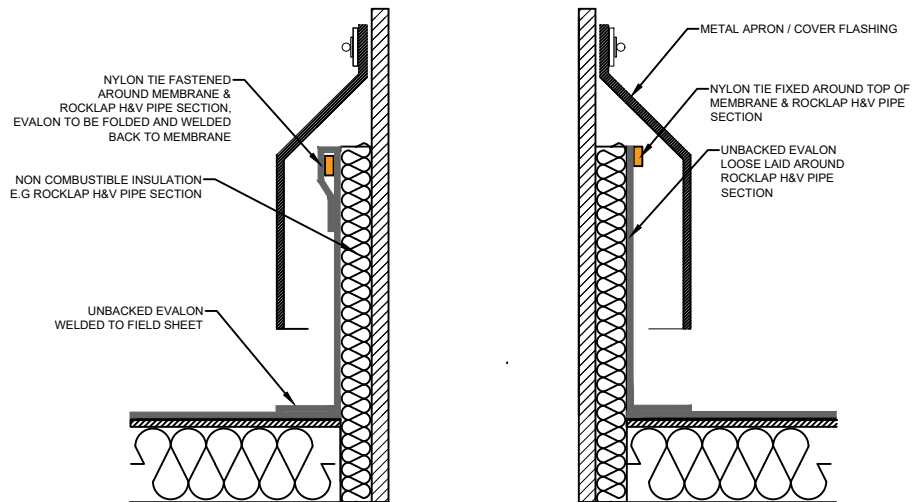
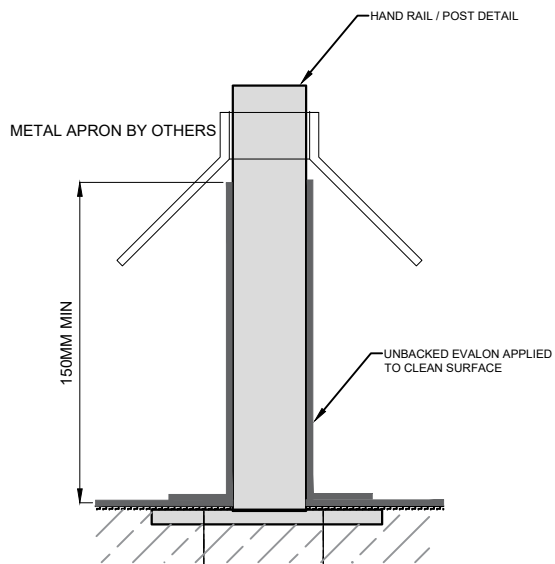


SECTION THROUGH PIPE/POST

TYPICAL DETAIL FOR: SOIL STACKS, VENTS PIPES, SUN PIPES, POSTS, FALL ARREST SYSTEM BOLTS, ANCHOR POINTS ETC.

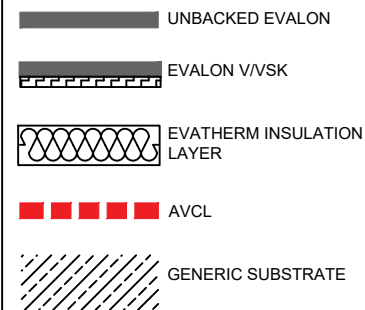


TYPICAL HOT FLUE PIPE



Handrail/Post Detail

KEY:



Notes:



Description:
SKIRTING DETAILS TO
CIRCULAR ROOF PENETRATIONS

This is a standard generic detail and should be used for reference purposes only, and not form part of a specification document.

PRODUCT: ALWITRA
EVALON V/VSK

Drawing Date:
JUNE 2021

Scale:
NTS

Drawing No: EVA STD -3.7	Rev. 2	Sheet 1 / 1
------------------------------------	------------------	-----------------------