



## Non Adjustable Paving Slab Supports PS1

The PS1 is one of a range of stackable paving supports which makes it easy and quick to establish a fully levelled paved or timber deck surface on most types of flat roofs or balconies.

### TECHNICAL SPECIFICATIONS

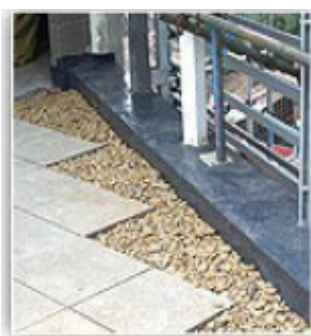
- Injection moulded
- High-density polyethylene compatible with most roofing systems
- Non-toxic, age and weather resistant
- CFC and HCFC free
- Bearing surface 220cm<sup>2</sup>

### BENEFITS

- Large load spread capability
- Protects the roofing membrane against UV radiation and direct wear and tear
- Drains the surface ensuring no puddles
- Deters the growth of unwanted vegetation
- The slabs can be adjusted to horizontal, to counteract the built in roof fall
- Ensures the easy removal of the paving, should inspection of the membrane be found necessary or any other maintenance activities be required
- Stackable to 200mm. high dependant on substrate

### PATIO AND BALCONY APPLICATIONS

The growing popularity of this system is due to the quick and easy method of installation. The system can be stacked as complete units or when divided into halves and quarters. The unique large supporting surface also reduces the pressure on the roof membrane and insulation.



Roof access walkway on apartment block in Manchester on Alwitra system



Roof balcony in Manchester on Alwitra system



Roof patio on an office in Nottingham on asphalt system

Height from foundation 7.5mm/15mm/45mm

Thickness of spacer 5mm

Height of spacer 15mm

Thickness of levelling shims 1.5mm

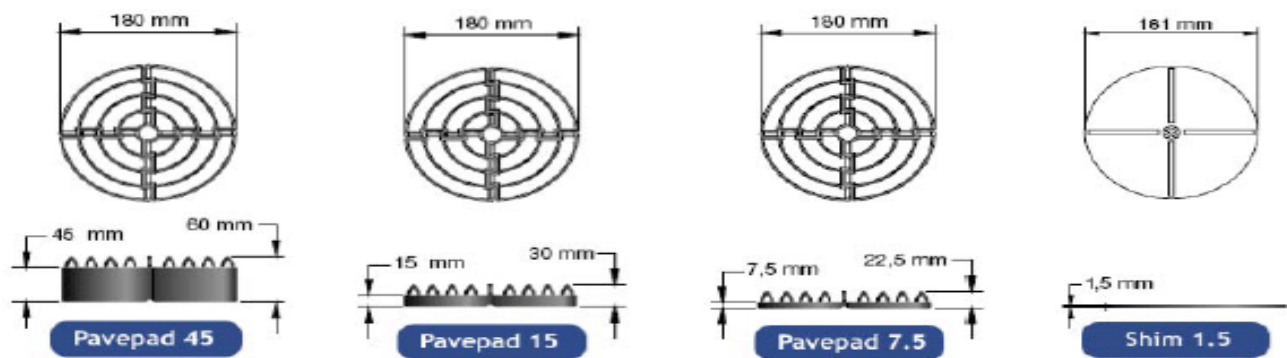
Diameter 180mm

Base area 22.000mm<sup>2</sup>

Maximum load per pavepad 1200kgs

Max load allowed for a 500 x 500 x 50mm thick slab exceeds the normal carrying capacity for pedestrian areas. The load depends on the actual roof construction and the carrying capability of the foundation of the roof.

## DIMENSIONS



Minimum pad height recommended is 15mm to allow for sufficient drainage below slabs